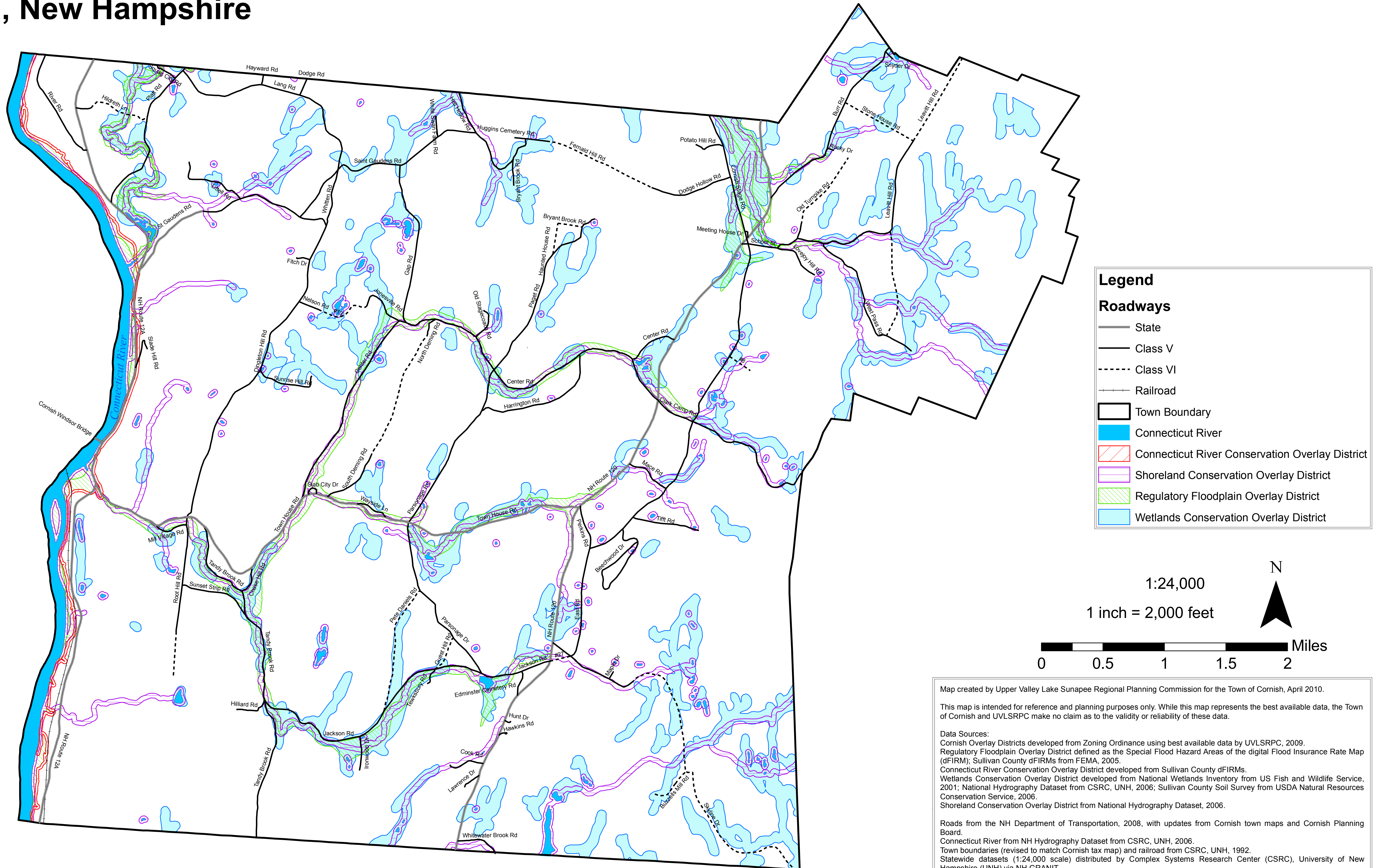


Conservation Overlay Districts and Regulatory Floodplain Overlay District Cornish, New Hampshire



Map created by Upper Valley Lake Sunapee Regional Planning Commission for the Town of Cornish, April 2010.

This map is intended for reference and planning purposes only. While this map represents the best available data, the Town of Cornish and UVLSRPC make no claim as to the validity or reliability of these data.

Data Sources:
 Cornish Overlay Districts developed from Zoning Ordinance using best available data by UVLSRPC, 2009.
 Regulatory Floodplain Overlay District defined as the Special Flood Hazard Areas of the digital Flood Insurance Rate Map (dFIRM); Sullivan County dFIRMs from FEMA, 2005.
 Connecticut River Conservation Overlay District developed from Sullivan County dFIRMs.
 Wetlands Conservation Overlay District developed from National Wetlands Inventory from US Fish and Wildlife Service, 2001; National Hydrography Dataset from CSRC, UNH, 2006; Sullivan County Soil Survey from USDA Natural Resources Conservation Service, 2006.
 Shoreland Conservation Overlay District from National Hydrography Dataset, 2006.

Roads from the NH Department of Transportation, 2008, with updates from Cornish town maps and Cornish Planning Board.
 Connecticut River from NH Hydrography Dataset from CSRC, UNH, 2006.
 Town boundaries (revised to match Cornish tax map) and railroad from CSRC, UNH, 1992.
 Statewide datasets (1:24,000 scale) distributed by Complex Systems Research Center (CSRC), University of New Hampshire (UNH) via NH GRANIT.

Disclaimer:
 Digital data in NH GRANIT represent the efforts of the contributing agencies to record information from the cited source materials. CSRC, under contract to the Office of Energy and Planning (OEP), and in consultation with cooperating agencies, maintains a continuing program to identify and correct errors in these data. OEP, CSRC, and the cooperating agencies make no claim as to the validity or reliability or to any implied uses of these data.