

CORNISH SCHOOL DISTRICT SAU PLANNING COMMITTEE

October 14, 2014

Cornish SAU Planning Committee Goals

The SAU Planning Committee, in meeting the requirements of RSA 194-C:2, will

- keep the best interests of Cornish students first and foremost in our decision making process;
- make decisions which seek the long term sustainability of our local school; and,
- recognize the fiscal impact of our decisions on the town of Cornish and its residents.

SINGLE DISTRICT ADVISABILITY: FACTS AND FIGURES

Presented to the Cornish SAU Planning Committee
October 14, 2014

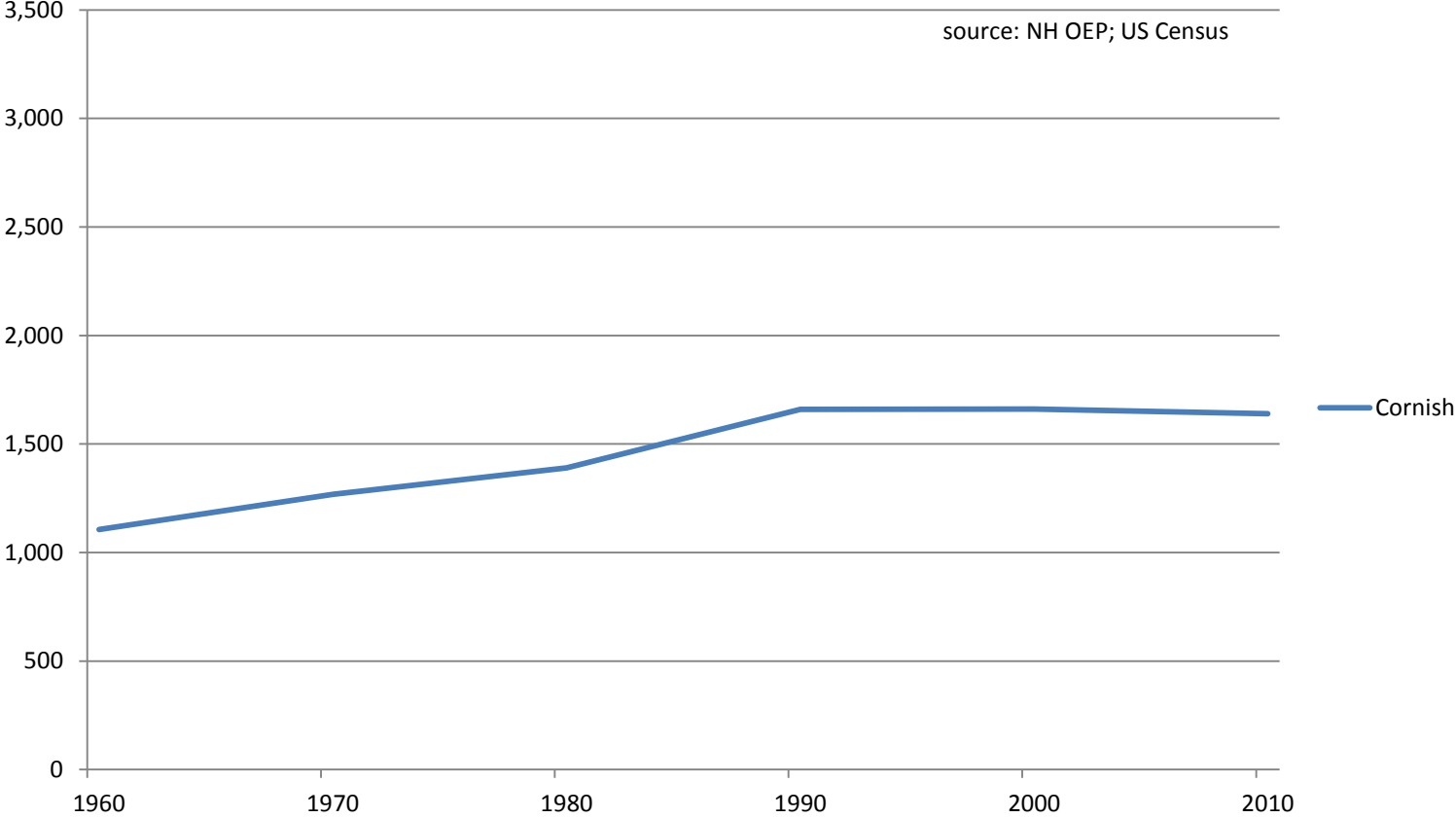
POPULATION TRENDS

in the New Hampshire towns of
Cornish, Grantham, Lyme, and Plainfield

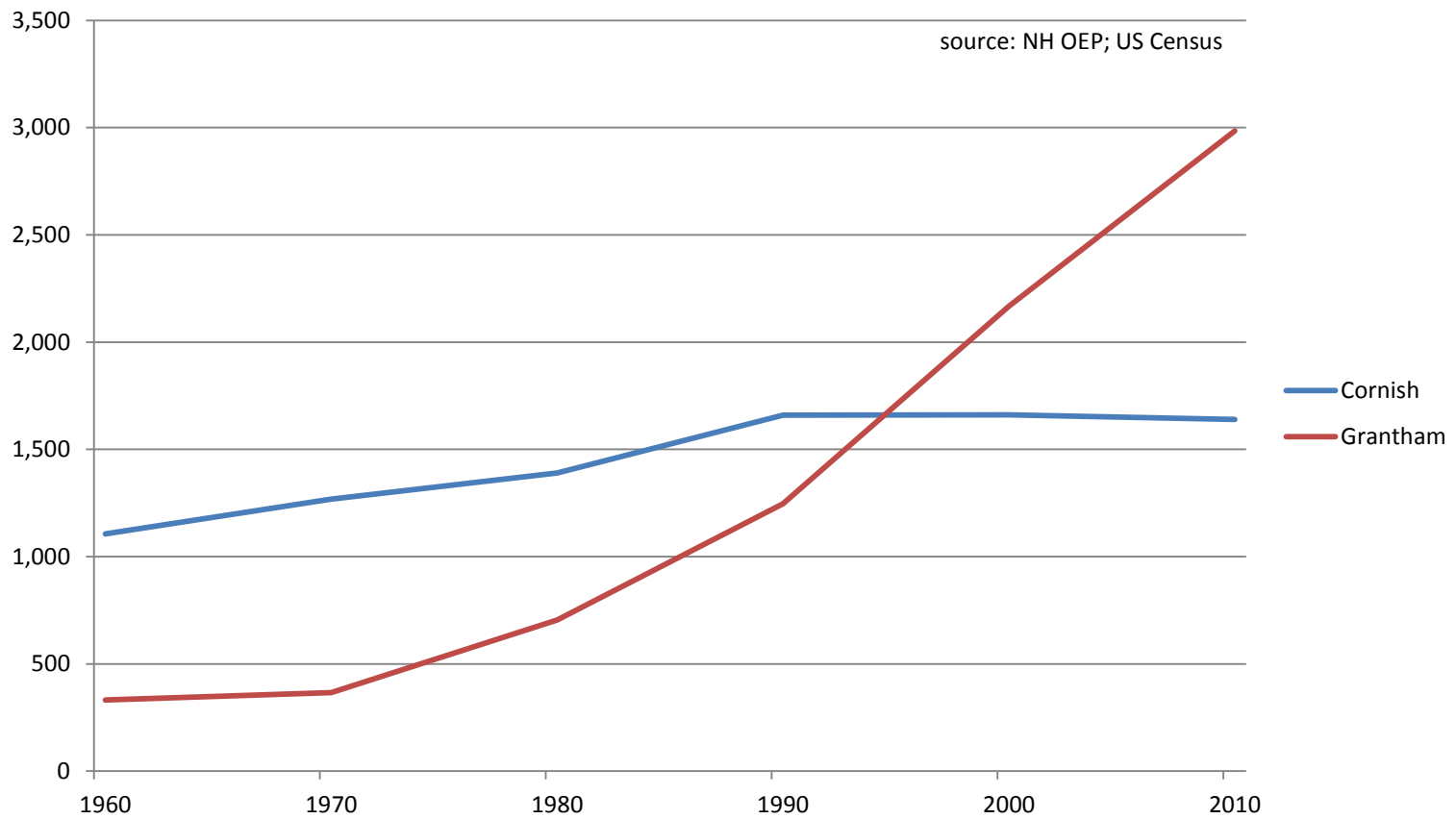


Town Population Trends 1960-2010

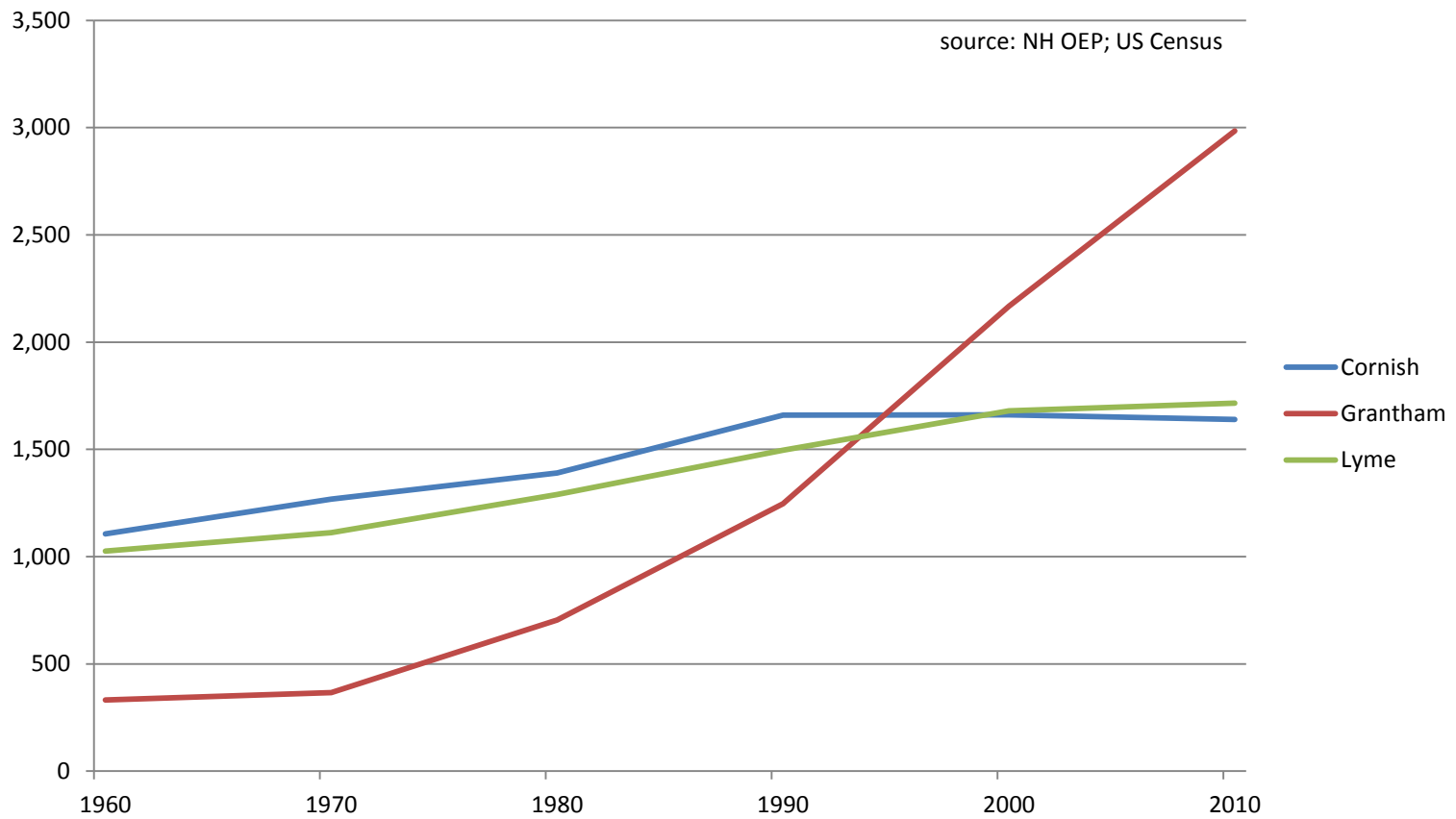
source: NH OEP; US Census



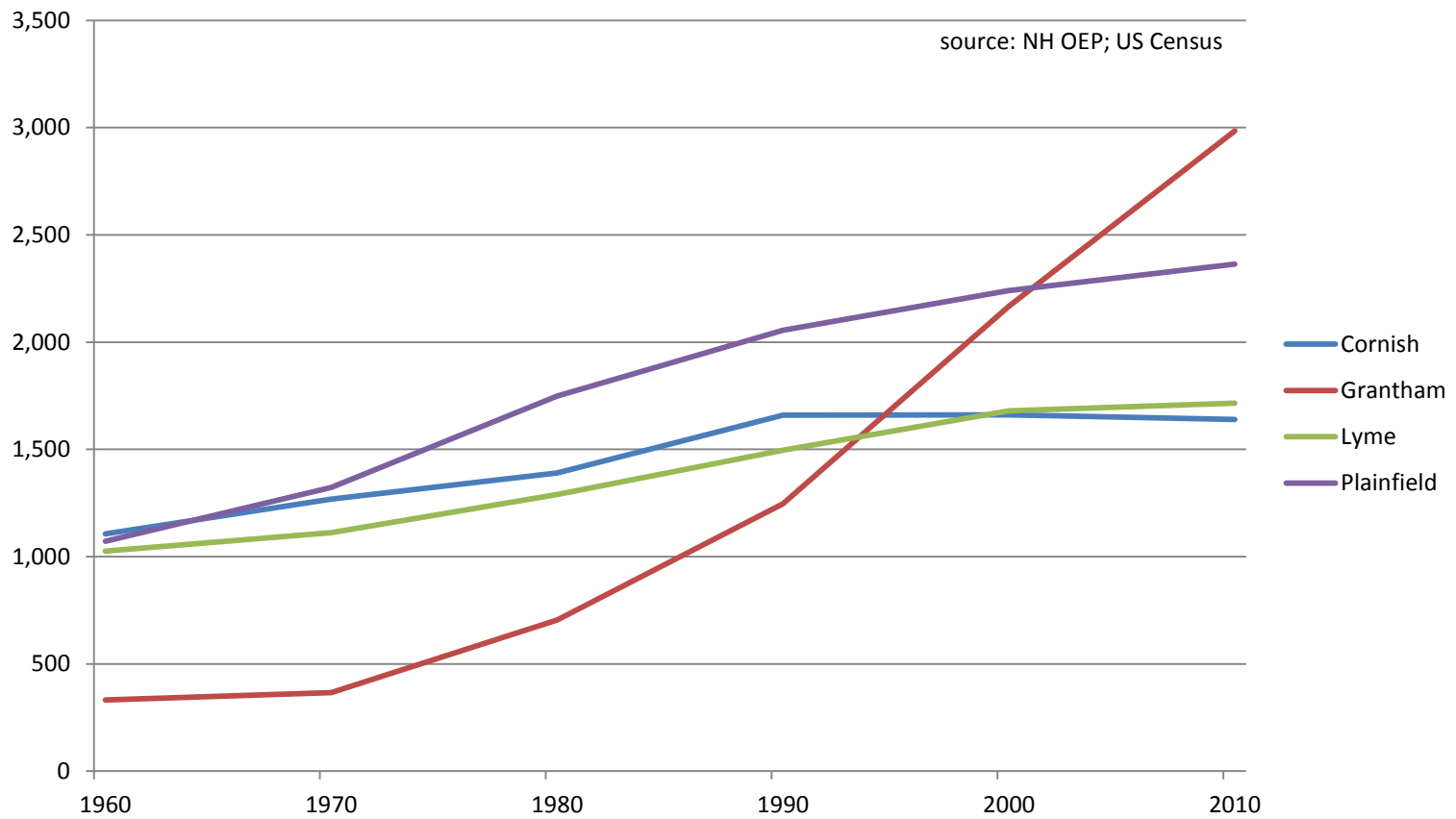
Town Population Trends 1960-2010



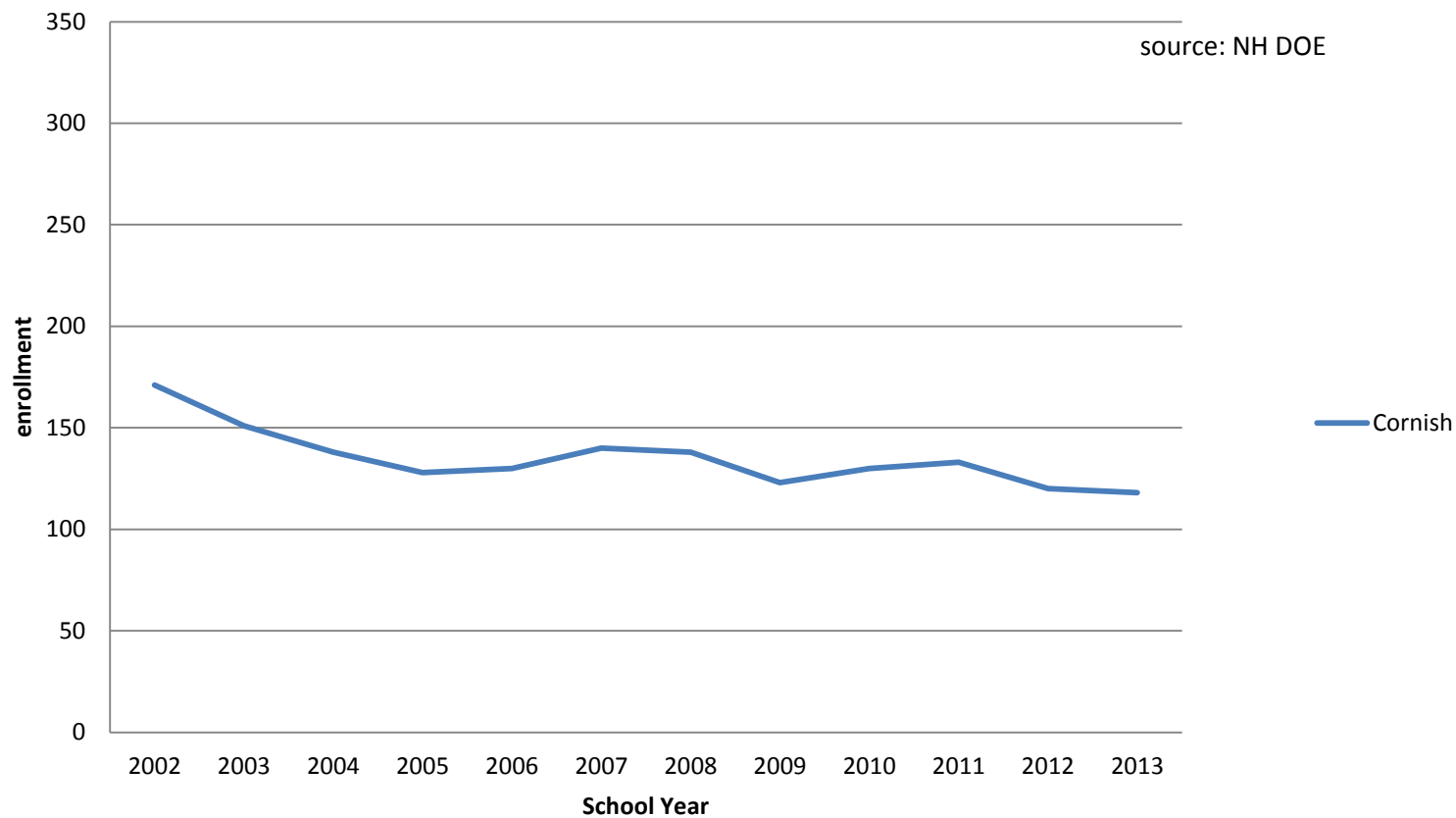
Town Population Trends 1960-2010



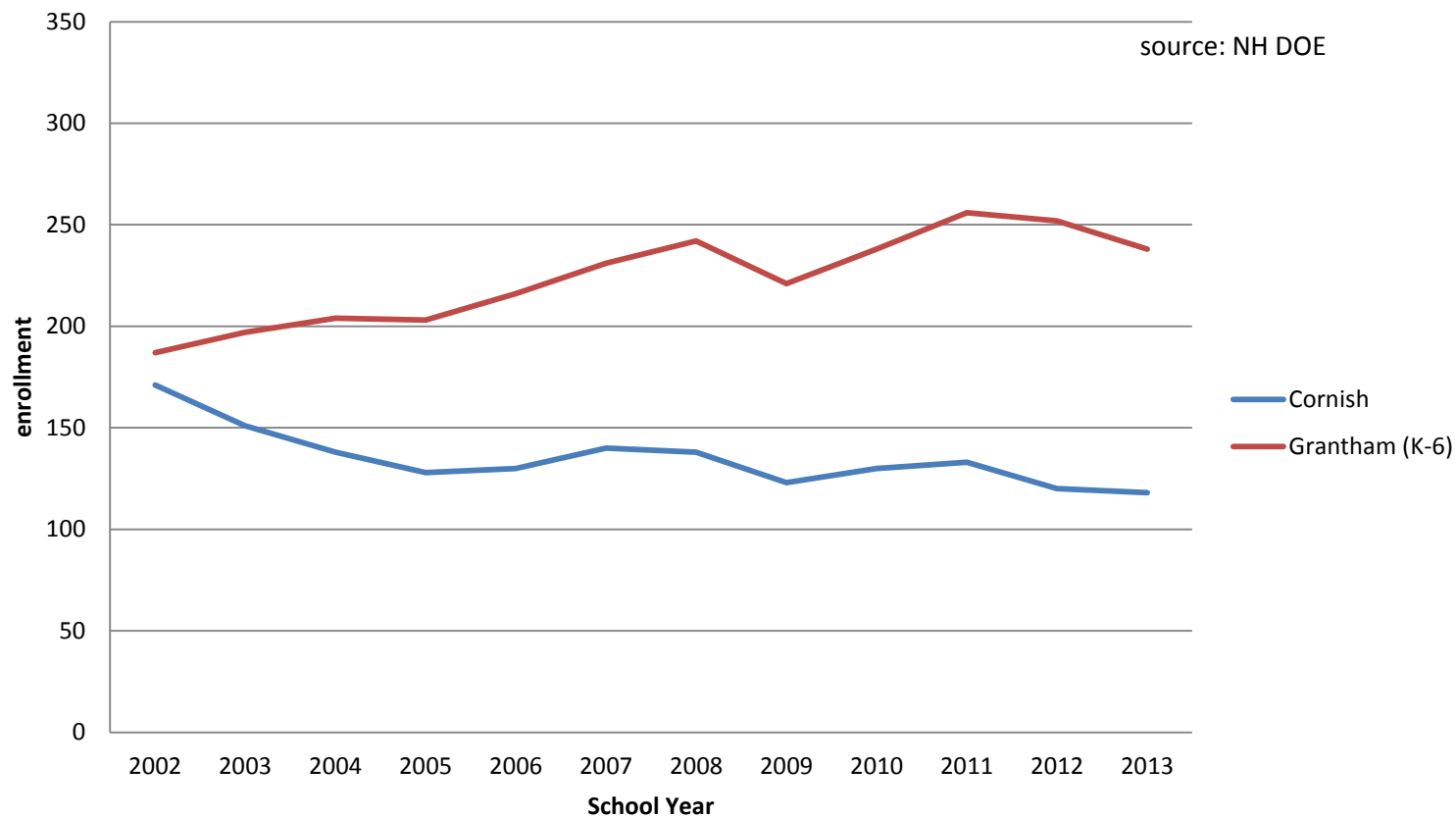
Town Population Trends 1960-2010



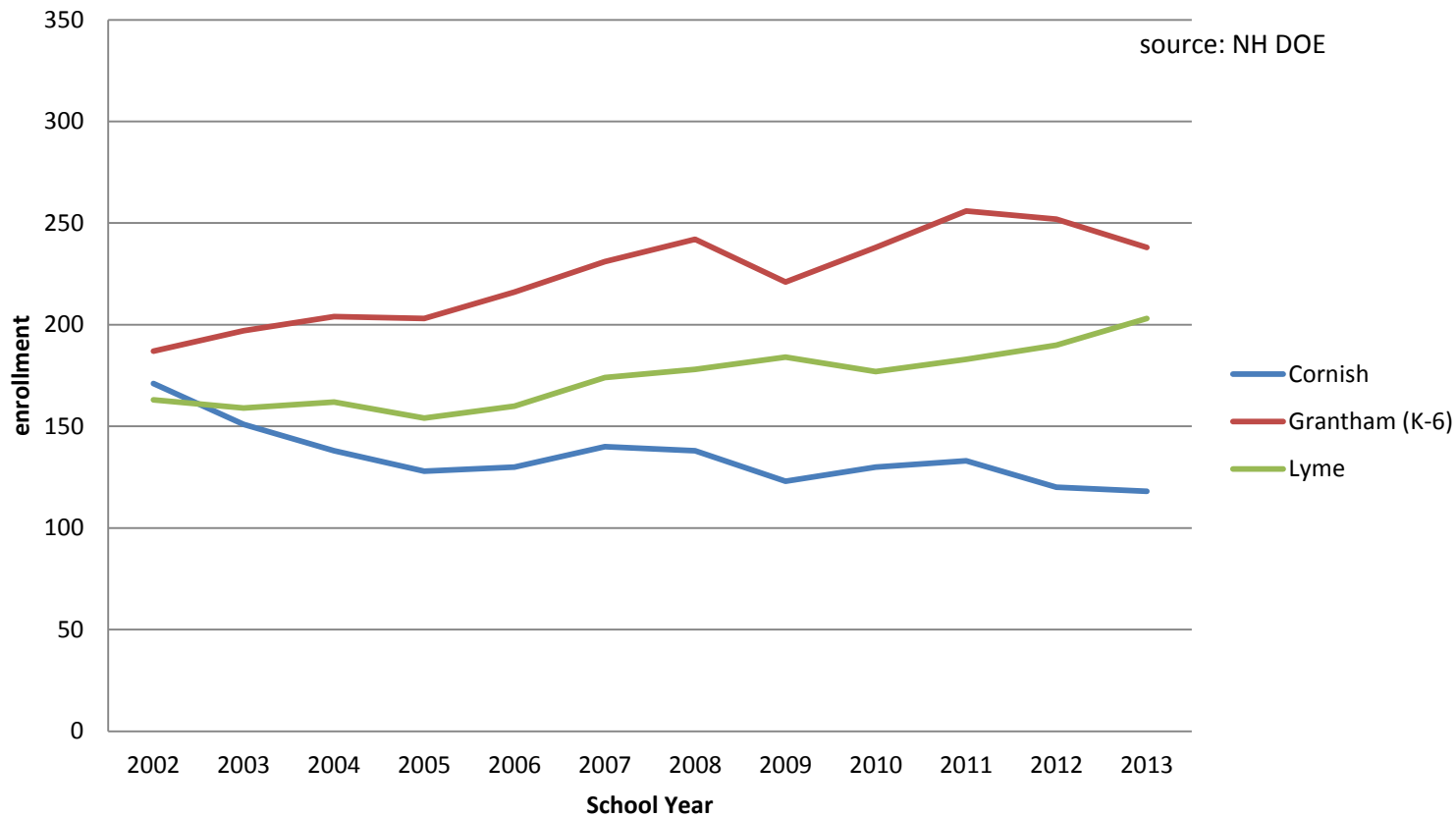
Elementary Enrollment Trends 2002-2013



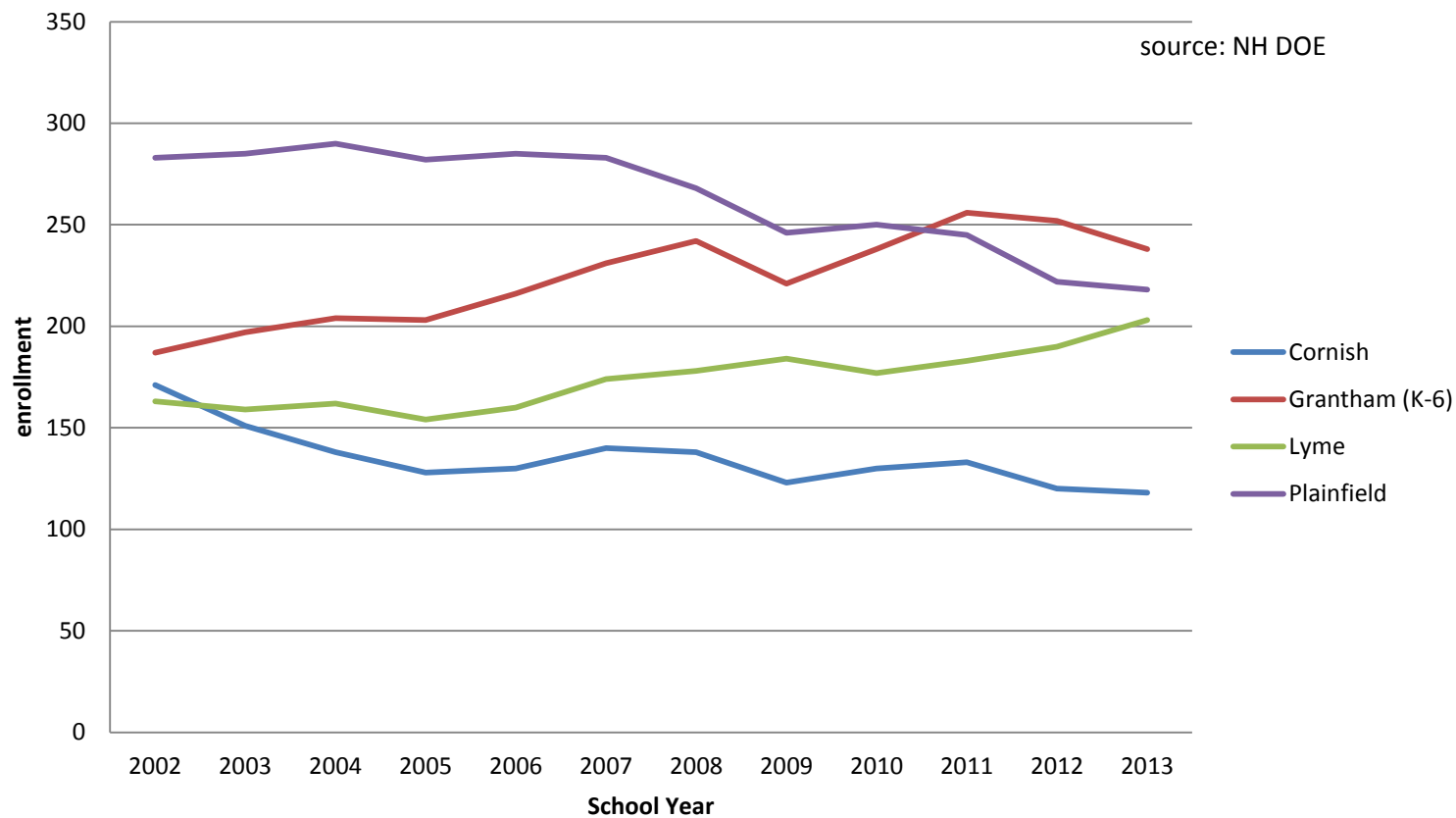
Elementary Enrollment Trends 2002-2013



Elementary Enrollment Trends 2002-2013

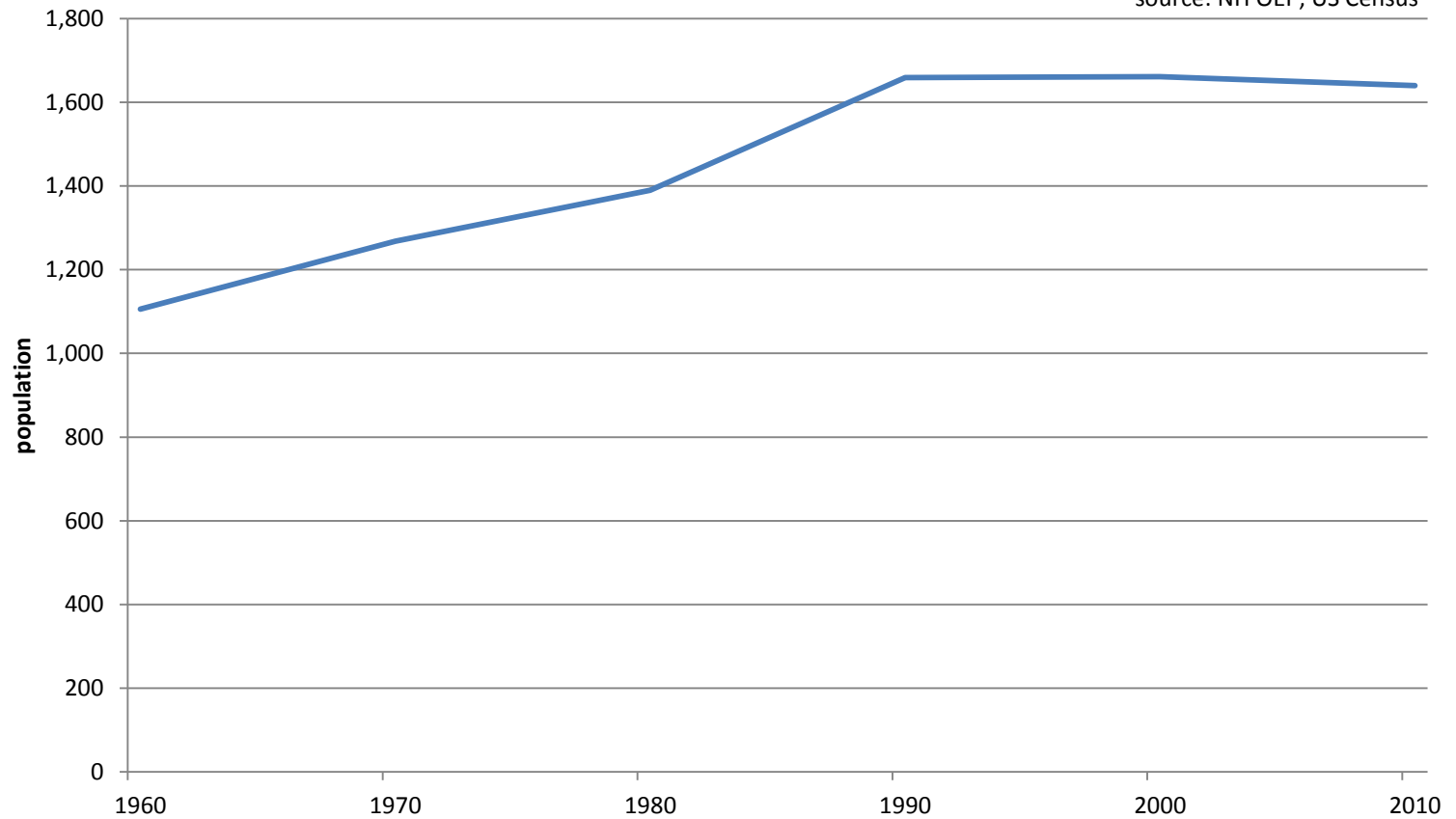


Elementary Enrollment Trends 2002-2013

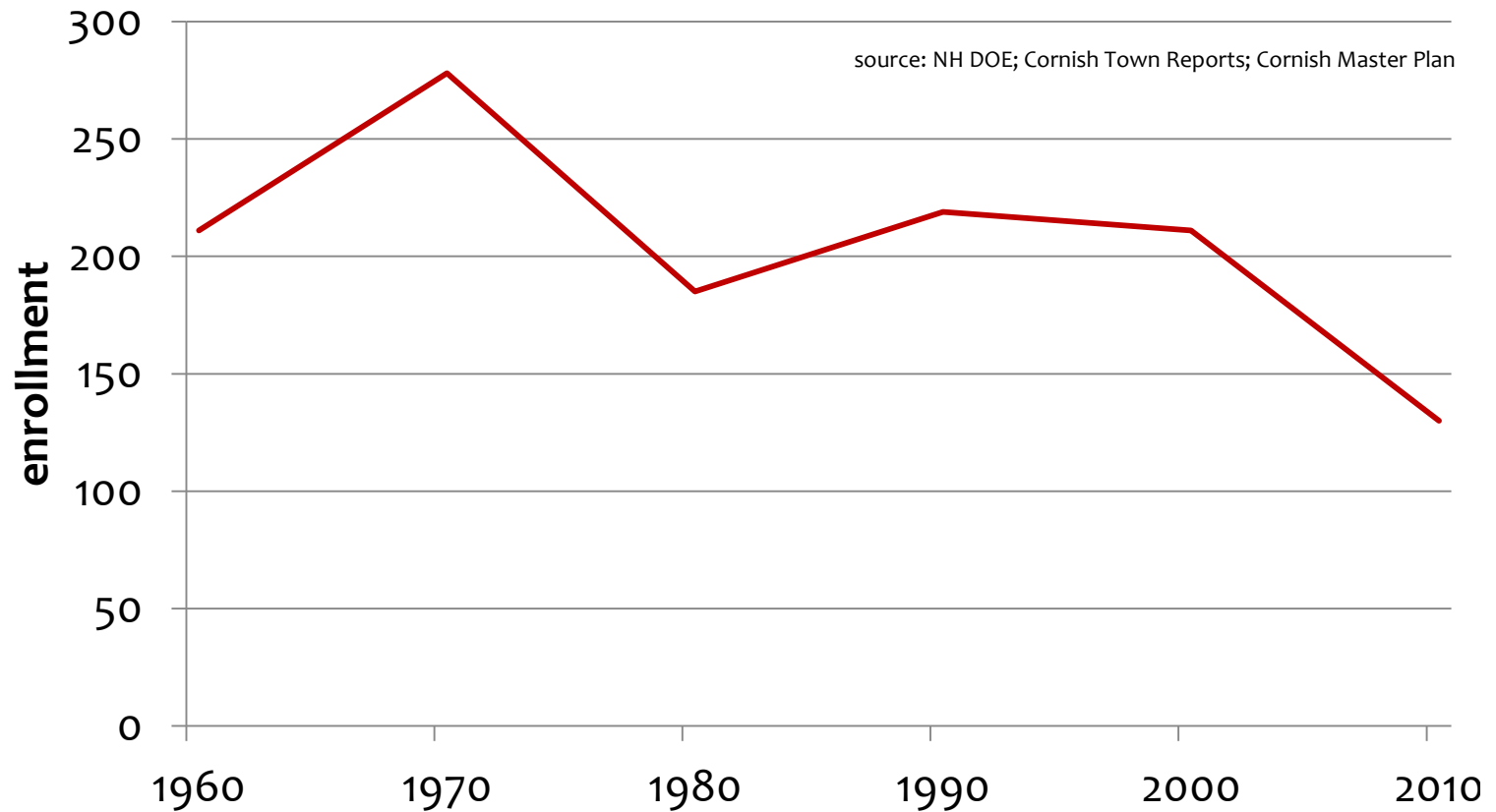


Town of Cornish Population Trends 1960-2010

source: NH OEP; US Census

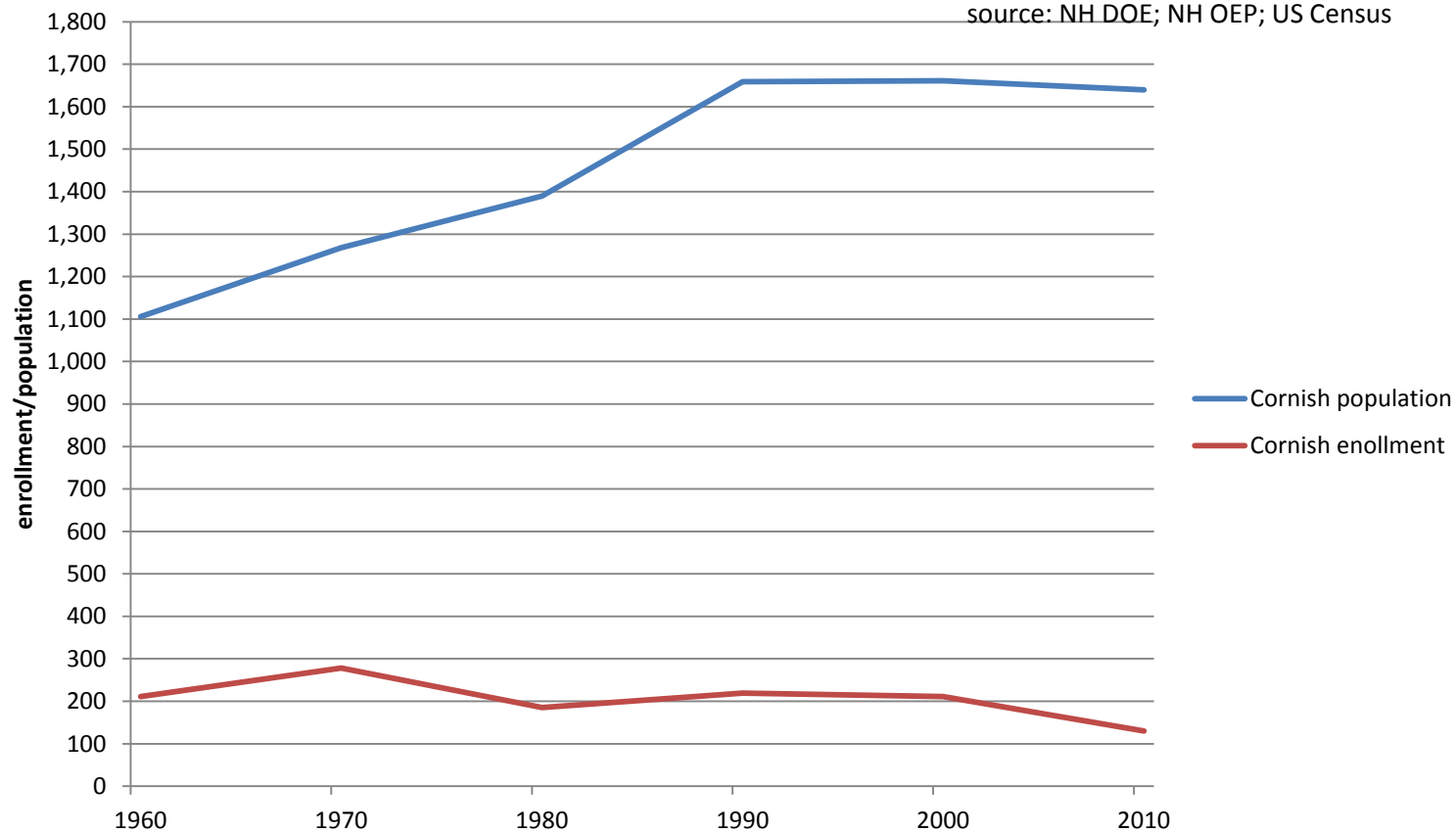


Cornish Student Enrollment Trends 1960-2010



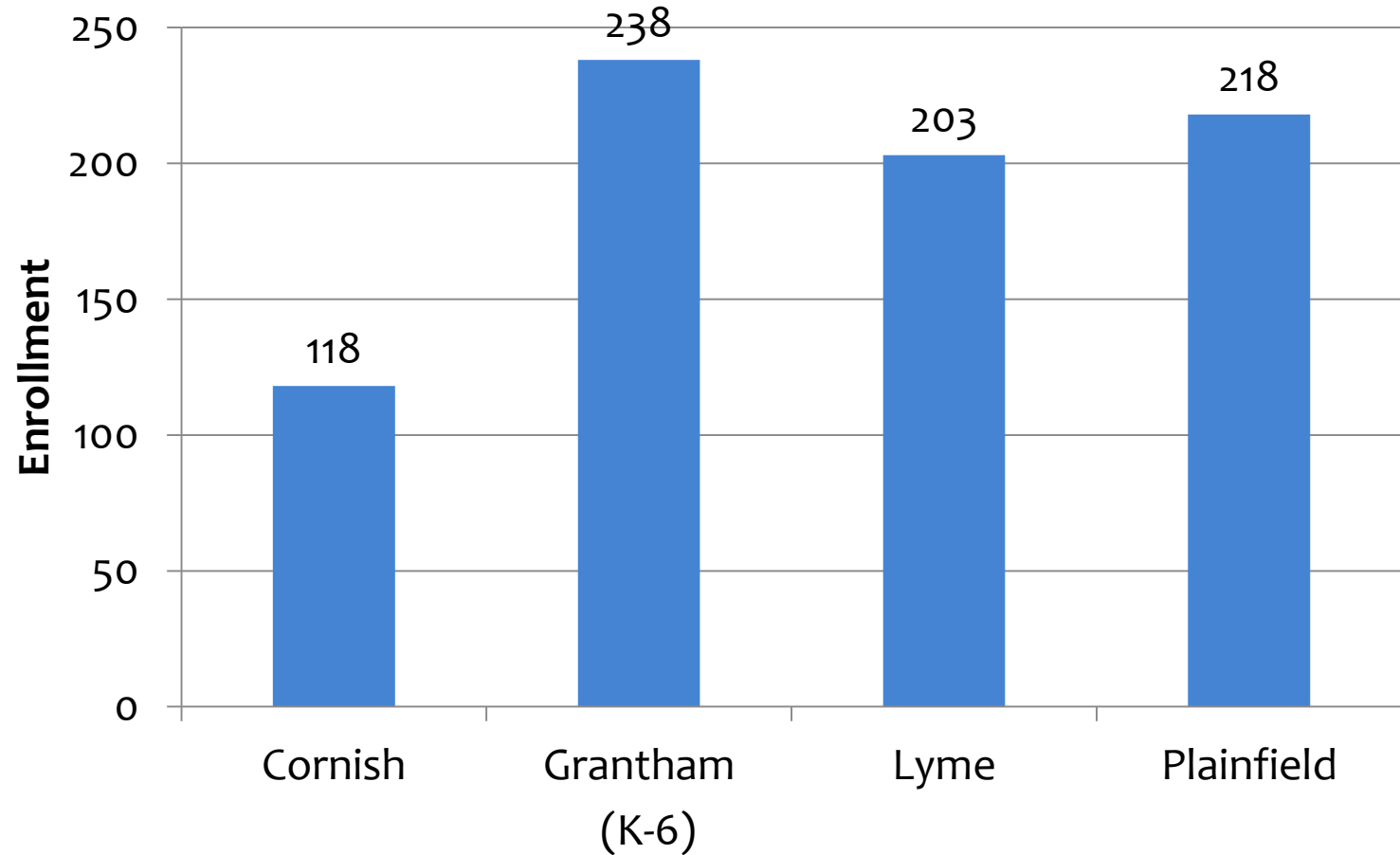
Cornish Population and Enrollment Trends 1960-2010

source: NH DOE; NH OEP; US Census



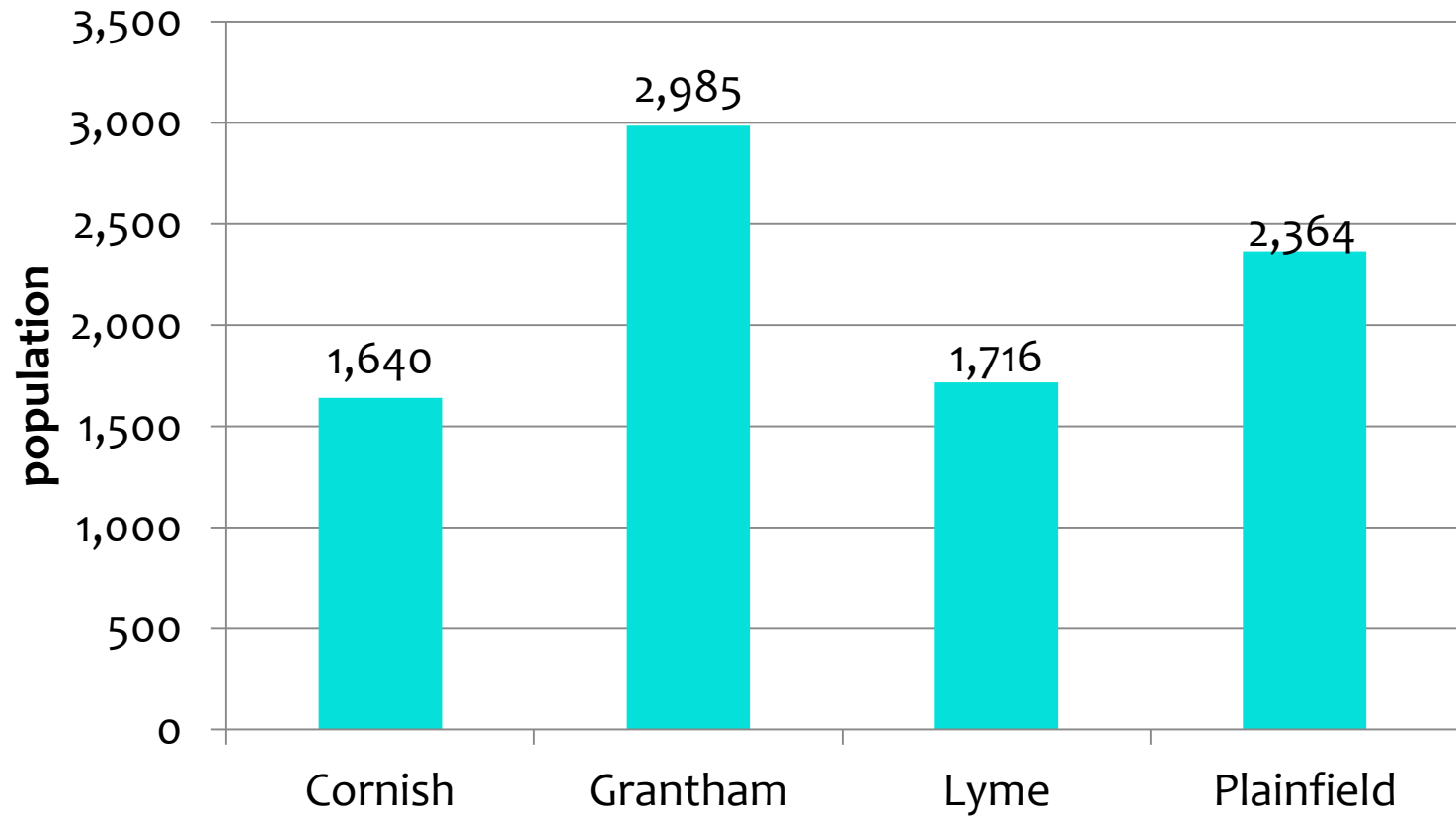
Elementary Enrollment 2013

source: NH DOE



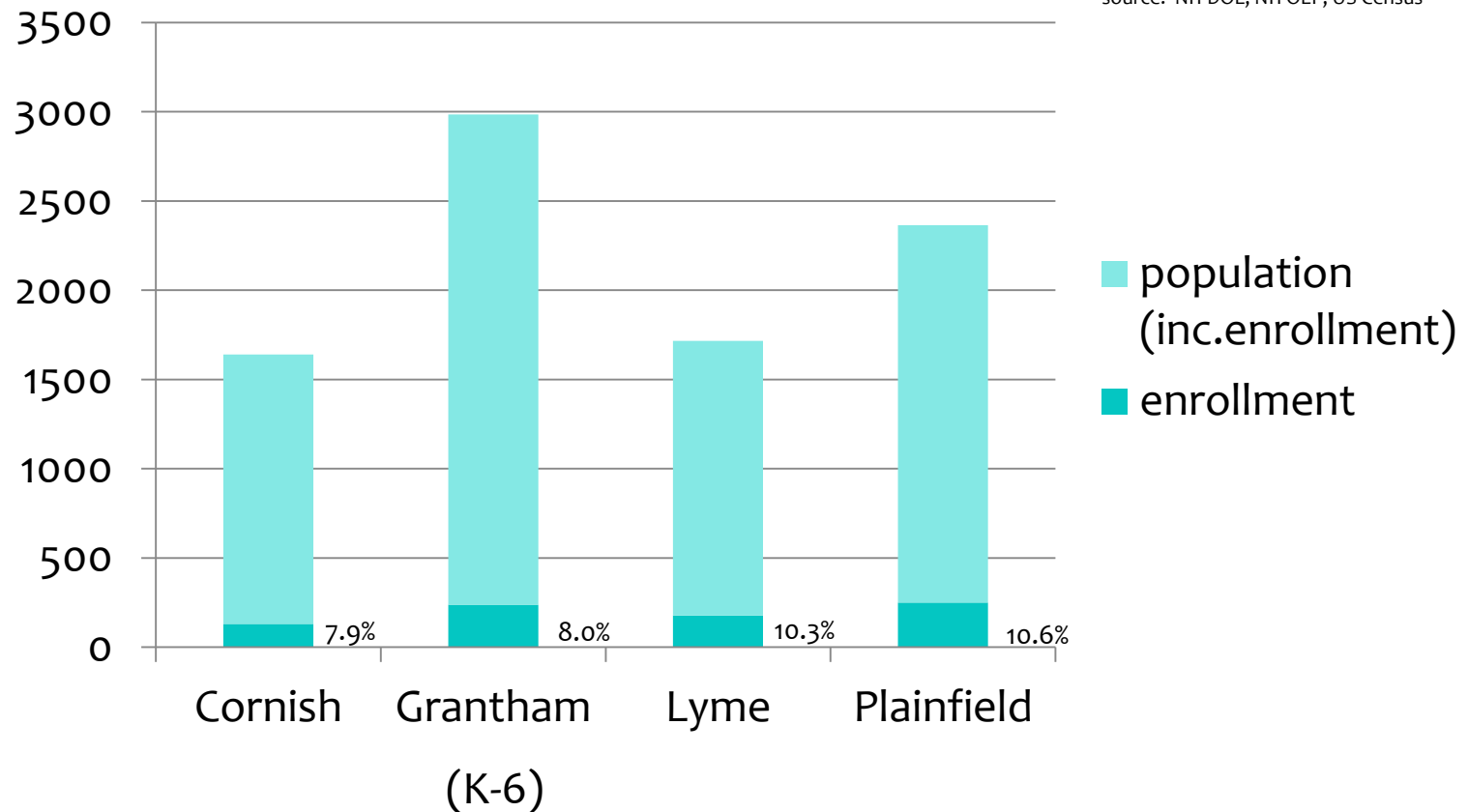


Town Populations 2010



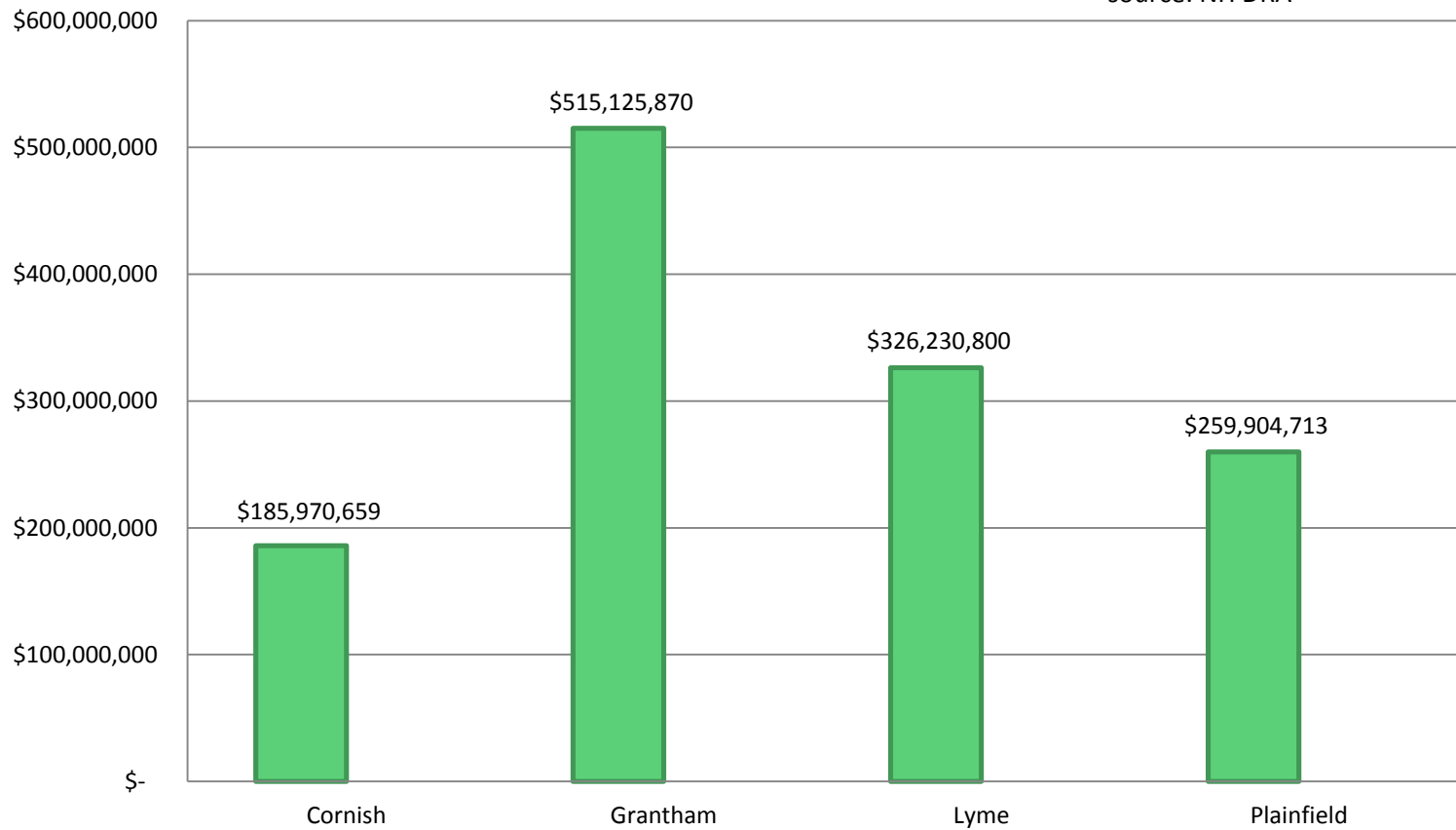
2010 Populations with 2010 Elementary Enrollment

source: NH DOE; NH OEP; US Census



2013 Town Valuations

source: NH DRA



Town Valuations and Tax Rates are Inversely Proportional

As a town's valuation increases, the impact on the tax rate decreases:

\$10,000 of spending in Grantham

... has a tax rate impact of 1.94 cents;

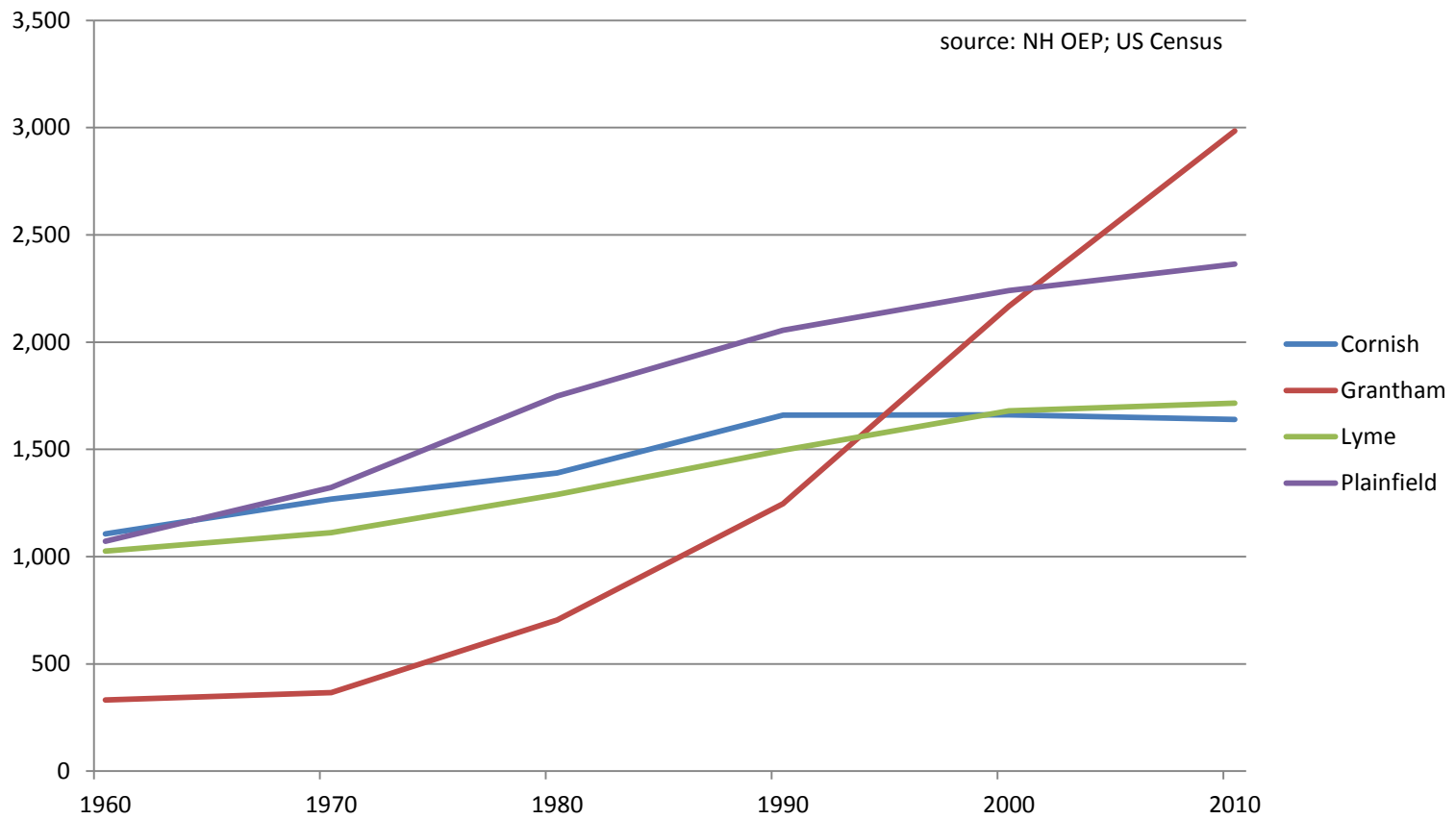
\$10,000 of spending in Cornish...

... has a tax rate impact of 5.38 cents.

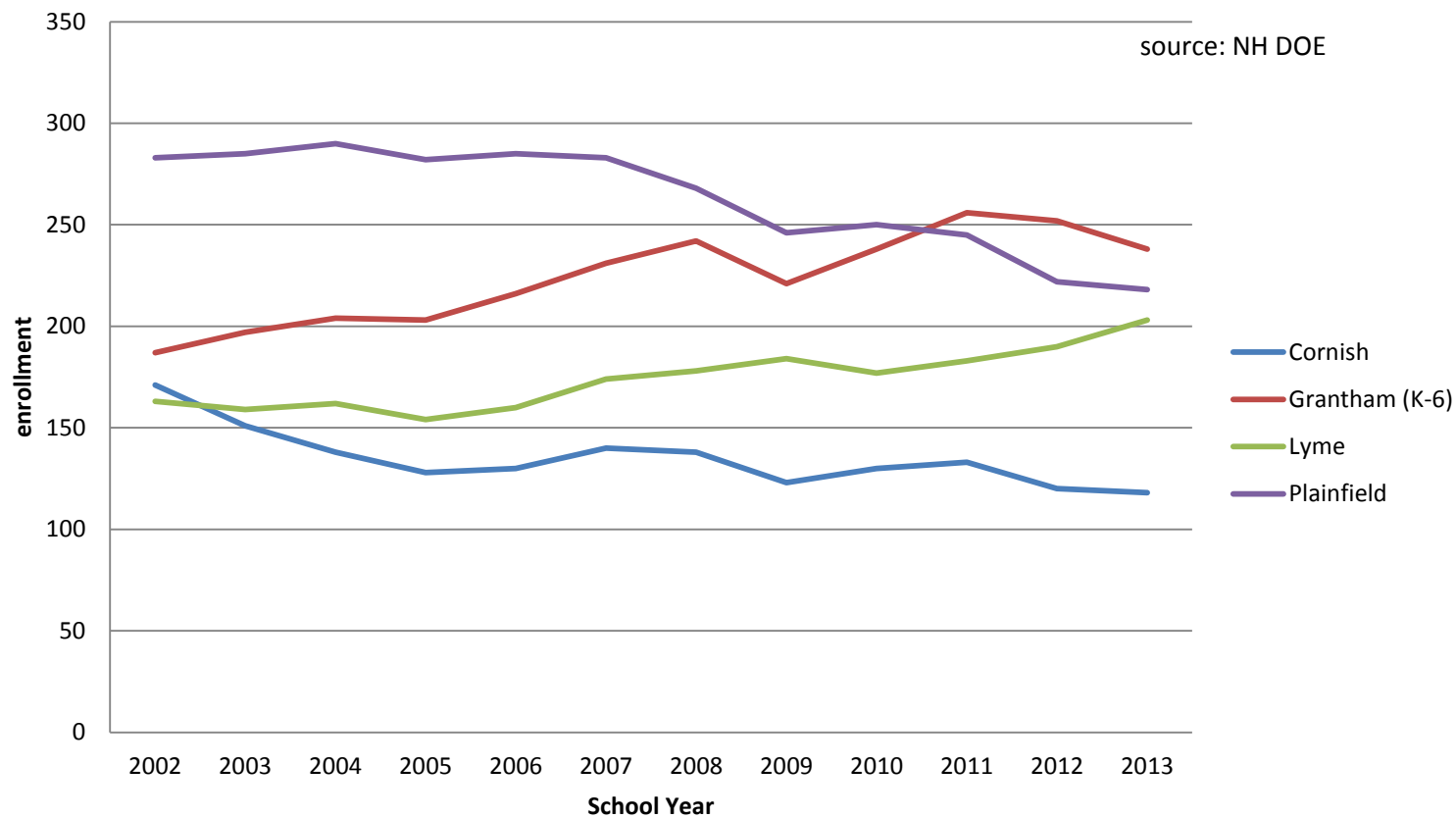
Why did they leave?

- * **Grantham** – Withdrew 1997/98. Saw the writing on the wall with Lebanon and formed SAU Study Committee. Unhappy with level of services and lack of autonomy under Lebanon.
- * **Lyme** – Withdrew 1999. Unhappy with SAU 70 (Hanover) relationship.
- * **Plainfield** – 1999 ‘divorced’ by Lebanon.

Town Population Trends 1960-2010




Elementary Enrollment Trends 2002-2013



A BRIEF HISTORY OF CORNISH SCHOOLS AND THE SAU SYSTEM


Brief History of Cornish Schools and the SAU System


- * **1790** – The Selectmen given authority to divide the town of Cornish into school districts. Two districts created.
- * **1848** – Cornish's population reaches 1,700. Student enrollment reaches 465. Cornish is divided into sixteen districts.
- * **1885** – Economic downturn and population decline. Town population c. 1,000. School enrollment 165.

- 
- * **1919** – The NH Legislature created the Board of Education and divided the state into Supervisory Unions. Superintendents were hired by the state and Supervisory Unions were determined by the state:

Sect. 9 The state board, through the commissioner of education acting as the executive officer of the board shall, in addition to the duties now performed by the above named boards and departments Combine the several school districts in the state into supervisory unions consisting of one or more school districts. In forming such unions it shall continue the unions formed under the provisions of the Laws of 1899, chapter 77, when that is a reasonable thing to do, and shall dissolve supervisory unions and form new unions when it finds that such action will promote the best interests of the schools.

(Laws of the State of New Hampshire, 1919, chapter 106).

- 
- * **1919** – The local Supervisory Union comprised Cornish, Plainfield, and Croydon
 - * **1923** – Superintendent Andrew P. Averill made 233 visits in one year to the ten Cornish schoolhouses.
 - * **1934** – Cornish was assigned to Supervisory Union 5: Cornish, Unity, Charlestown, Acworth, Langdon, Goshen, Lempster.

- 
- * **1936** – Electric lights installed in three schoolhouses.
 - * **1947** – Committee report recommended the construction of a central school and designated ‘Mr. Phillip’s pasture’ on a knoll above Town House Road as the best location.
 - * **1953** – A new central school: Cornish Elementary School.
 - * **1964** – Move towards regionalism: Cornish assigned to SAU6: Cornish, Claremont, and Unity.

- 
- * **1979** – Supervisory Unions become School Administrative Units.
 - * **1986** – Comprehensive rewrite of statute. DOE created.
 - * **1991** – Cornish School District withdraws from AREA agreement with Stevens HS.
 - * **1996** – RSA 194-C gives municipalities a provision to withdraw from and to form new School Administrative Units.
 - * In 1986, NH contained 56 SAUs. In 2013, NH SAUs numbered 98.

SCHOOL ADMINISTRATIVE UNITS

7-1-86

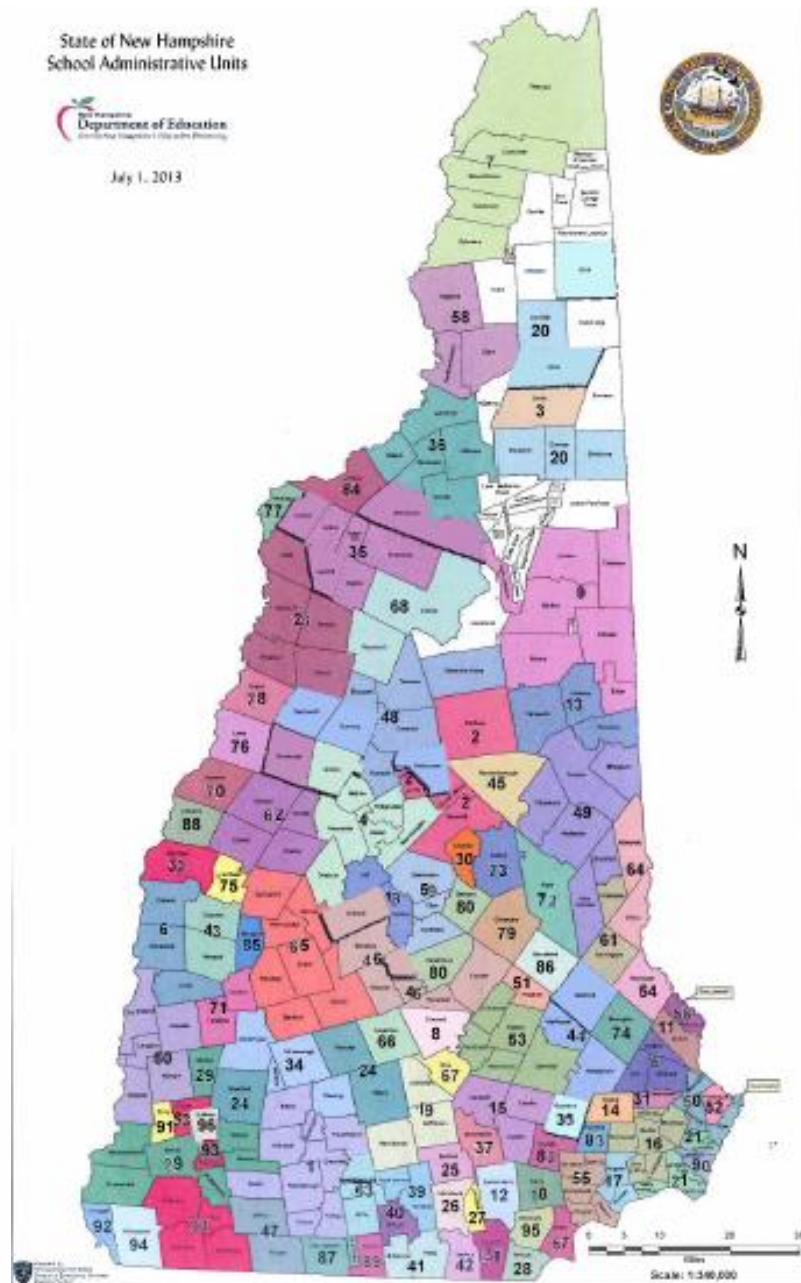
56



State of New Hampshire School Administrative Units

Department of Education
Ensuring a bright future for every child

July 1, 2013





Sources

- *Cornish Town and School Reports, various years.*
- *NH Department of Education.*
- *NH Department of Revenue.*
- *NH Office of Energy and Planning.*
- *The Organization of the NH School System: Dissolution or Evolution?* by John Teague, Esq., and James O'Shaughnessy, Esq., 2013.

MARCH 2014

Planning committee, a public body under RSA 91-A, created under RSA 194-C:2

*SAU Planning Committee Process and Timeline SUMMARY
full process described in 194-C:2*

organization

1. advisability
2. costs
3. financing
4. additional fiscal analysis
5. DOE - unique issues

reorganization

1. advisability
2. costs
3. financing
4. additional fiscal analysis
5. DOE - unique issues

withdrawal*

1. advisability
2. costs
3. financing
4. additional fiscal analysis
5. DOE - unique issues

*2014 School Warrant
article charges committee to
explore withdrawal -
chart continues only
with withdrawal option

Committee studies and
investigates 1-5 and prepares a plan
recommending withdrawal from or
remaining with SAU6
(RSA 194-C:2 IV)

no action

organization - single district SAU

1. advisability
2. costs
3. financing
4. additional fiscal analysis
5. DOE - unique issues

reorganization - join existing SAU

1. advisability
2. costs
3. financing
4. additional fiscal analysis
5. DOE - unique issues

submit plan to SAU6 districts

submit plan to state of NH

submit plan to SAU6 and existing SAU to join

submit plan to state of NH

MARCH 2015

Cornish District Mtg

rejected

3/5 affirmative

Cornish District Mtg

rejected

3/5 affirmative

Cornish and New SAU District meeting

rejected

3/5 affirmative

MARCH 2016

The school district
may submit the plan
again.

**new committee formed
process begins anew**

**remain
SAU6**

Cornish District Mtg (optional)

rejected

3/5 affirmative

**remain SAU6;
no committee formed
under 194-C:2 for two years**

**new single
district**

Cornish and New SAU District meeting (optional)

rejected

3/5 affirmative

**remain SAU6;
no committee formed
under 194-C:2 for two years**

join existing district

HMJ 7/28/2014

MARCH 2014

Planning committee, a public body under RSA 91-A, created under RSA 194-C:2

SAU Planning Committee Process and Timeline SUMMARY
full process described in 194-C:2

withdrawal*

1. advisability
2. costs
3. financing
4. additional fiscal analysis
5. DOE - unique issues

*2014 School Warrant
article charges committee to
explore withdrawal -
chart continues only
with withdrawal option

Committee studies and
investigates 1-5 and prepares a plan
recommending withdrawal from or
remaining with SAU6
(RSA 194-C:2 IV)

organization - single district SAU

1. advisability
2. costs
3. financing
4. additional fiscal analysis
5. DOE - unique issues

submit plan to SAU6 districts

submit plan to state of NH

MARCH 2015

Cornish District Mtg

rejected

3/5 affirmative

MARCH 2016

The school district
may submit the plan
again.

Cornish District Mtg (optional)

rejected

3/5 affirmative

remain SAU6:
no committee formed
under 194-C:2 for two years

new single
district

MARCH 2014

Planning committee, a public body under RSA 91-A, created under RSA 194-C:2

SAU Planning Committee Process and Timeline SUMMARY
full process described in 194-C:2

withdrawal*

1. advisability
2. costs
3. financing
4. additional fiscal analysis
5. DOE - unique issues

*2014 School Warrant
article charges committee to
explore withdrawal -
chart continues only
with withdrawal option

Committee studies and
investigates 1-5 and prepares a plan
recommending withdrawal from or
remaining with SAU6
(RSA 194-C:2 IV)

organization - single district SAU

1. advisability
2. costs
3. financing
4. additional fiscal analysis
5. DOE - unique issues

reorganization - join existing SAU

1. advisability
2. costs
3. financing
4. additional fiscal analysis
5. DOE - unique issues

submit plan to SAU6 districts

submit plan to state of NH

submit plan to SAU6 and existing SAU to join

submit plan to state of NH

MARCH 2015

Cornish District Mtg

rejected 3/5 affirmative

Cornish and New SAU District meeting

rejected 3/5 affirmative

MARCH 2016

The school district
may submit the plan
again.

Cornish District Mtg (optional)

rejected 3/5 affirmative

remain SAU6;
no committee formed
under 194-C:2 for two years

Cornish and New SAU District meeting (optional)

rejected 3/5 affirmative

remain SAU6;
no committee formed
under 194-C:2 for two years

new single
district

join existing district