

**PHOTOGRAPHS FROM THE THUM-DRIVE**

**FOR THE CORNISH 250<sup>TH</sup> BOOK,**

**SELECTED FROM THE THUM-DRIVE**



View from Wilson Road,  
near Windsor, Vt.

*Hand-Color'd*



F6942 Blow-me-Down Mill, Windsor, Vt.

Cornish Vt.

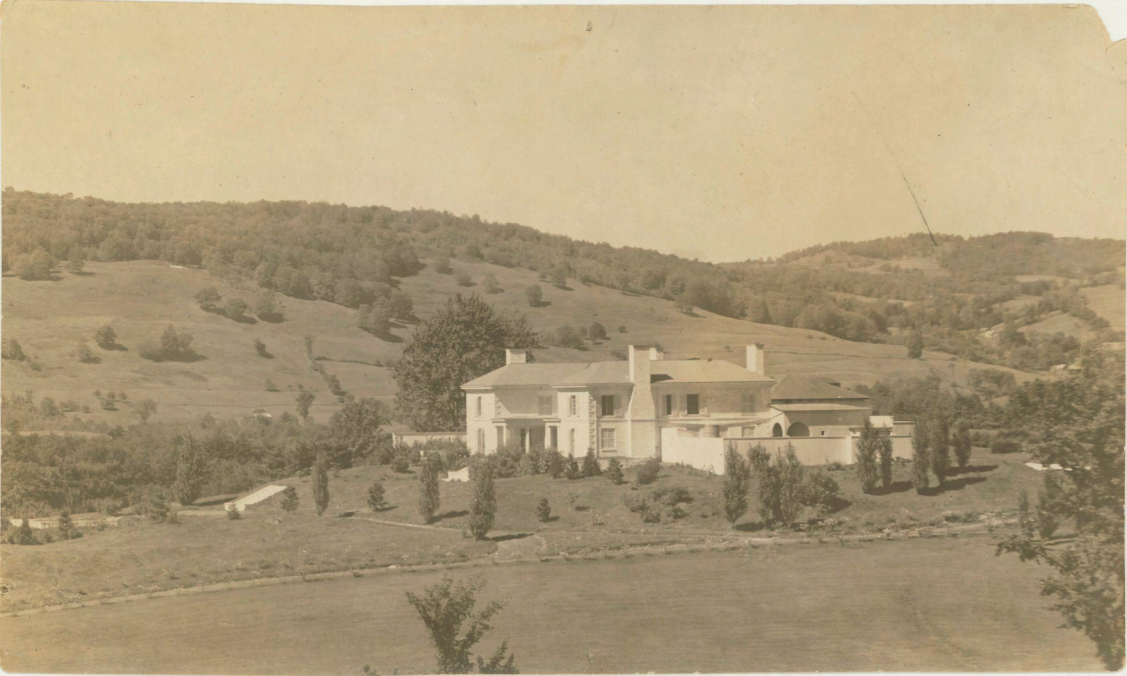
Cornish Flat, N. H. & Croydon Mountain.































HIDDEN VALLEY  
B.S.A. RESERVATION  
TROOP 332

























Methodist Church and Grange











