

BASEMENT

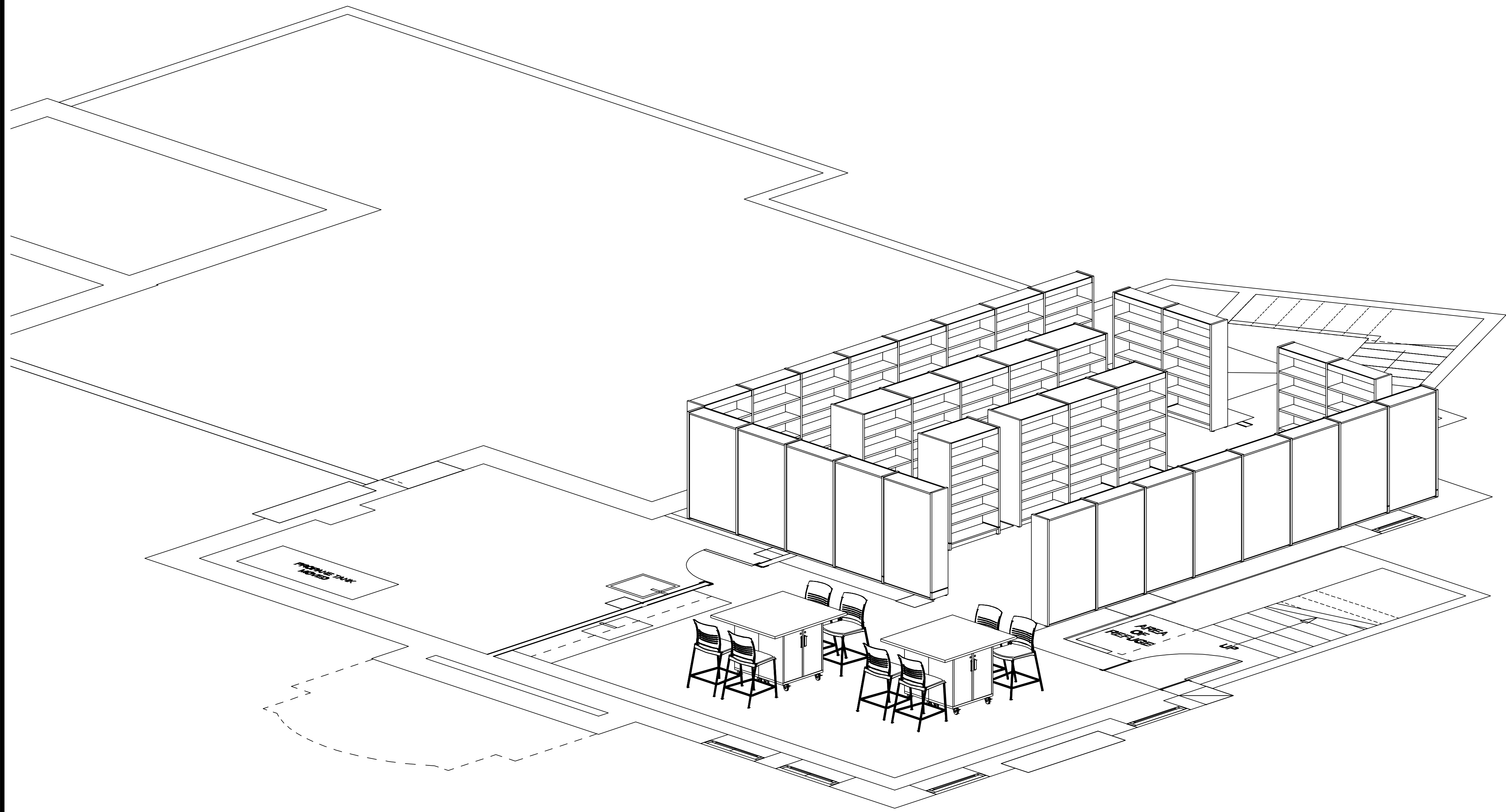
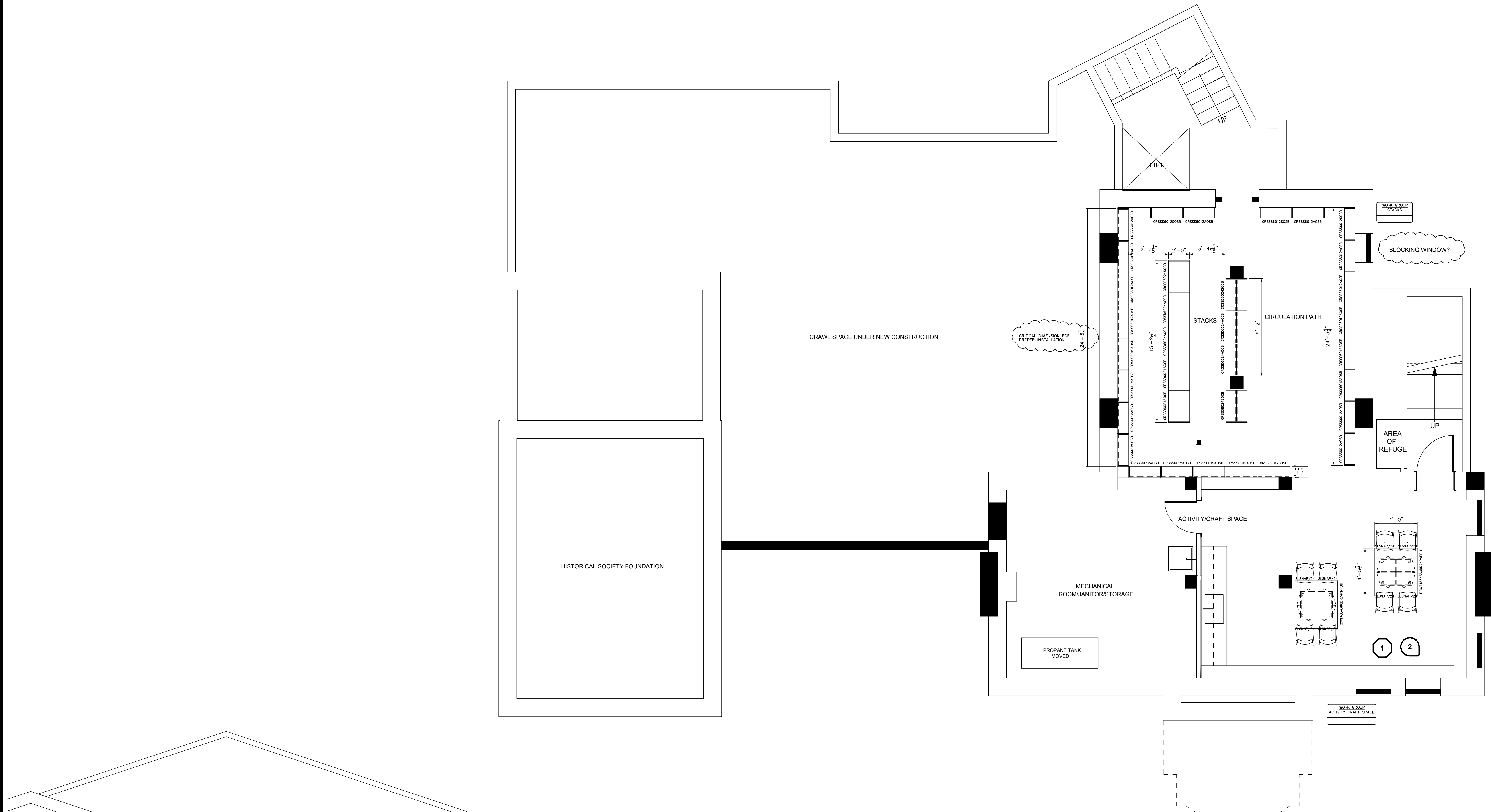
BUILDING SHELL HAS BEEN CONVERTED FROM PDF AND MAY NOT BE ACCURATE.  
CONFIRM ALL ROOM DIMENSIONS TO ENSURE PROPER FIT OF FURNITURE

**CONFIDENTIALITY**  
This Plan is the confidential property of Kruger International, Inc. and contains information that is not to be used, copied, reproduced, distributed or otherwise disseminated in whole or in part, in any form, without the prior written consent of Kruger International, Inc.

**FIELD VERIFICATION**  
This Plan incorporates building information compiled from various sources associated with this project and is intended as a guide. Conditions directly affecting the product or its installation must be field verified.

**CODE REQUIREMENTS**  
It is the responsibility of the Contractor to interpret all applicable portions of the 2021 International Building Code (IBC), however, due to nature beyond the control of the Designer, the Plan may not be IBC compliant. As a result, the Contractor is responsible for ensuring that all work is done in accordance with the applicable code requirements. The Designer is not responsible for ensuring that the work complies with the applicable code requirements. Approval of this Plan shall include agreement to the foregoing.

**RECOMMENDATIONS**  
It is recommended that these Plans and the resulting layout be reviewed with the local fire inspector to verify compliance with all local building codes. It is the responsibility of the Contractor to ensure that all work is done in accordance with all applicable codes and regulations.



**WORKGROUP—ACTIVITY CRAFT SPACE**

ITEM	QTY	PART NUMBER	TAG	DESCRIPTION
1	2	RCWT485436CDR-74P-NP-BH	RCWT485436CDR74P-NP-BH	RUDOLPH 48X36 DOUBLE-FACED 2X2 CUBBY STORAGE, W/DOORS, 1-1/4"
2	8	SLSNAP-24	SLSNAP/24	LAMINATE TOP WITH 74P EDGE STRIVE FOUR-LEG ARMLESS CAFE STOOL/POLY

09-15-2022 02:14 PM

**WORKGROUP—STACKS**

ITEM	QTY	PART NUMBER	TAG	DESCRIPTION
1	6	CRSS6024A-O-PS-TR-BP	CRSS6024A00B	CROSSROADS 60" METAL SHELVING ADDER—DOUBLE FACE, 240X36—1/4" W/OAK
2	3	CRSS6024A-O-PS-TR-BP	CRSS6024A00B	CROSSROADS 60" METAL SHELVING STARTER—DOUBLE FACE, 240X36—1/2" W/OAK
3	20	CRSS6012A-O-PS-TR-BP	CRSS6012A00B	CROSSROADS 60" METAL SHELVING ADDER—SINGLE FACE, 120X36—1/4" W/OAK
4	5	CRSS6012S-O-PS-TR-BP	CRSS6012S00B	CROSSROADS 60" METAL SHELVING STARTER—SINGLE FACE, 120X36—1/2" W/OAK

09-15-2022 02:14 PM

VERIFY BLDG'S PERMANENT STRUCTURE IS SUFFICIENT TO SUPPORT WEIGHT OF FURNITURE.  
VERIFY WINDOW SILL HEIGHTS TO ENSURE PROPER FIT OF FURNITURE.  
VERIFY WALL/WINDOW PANEL WALLMOUNTS, DESKS AND STORAGE HEIGHTS.  
VERIFY ALL WALL FEATURES (E.G. HANDRAILS, LIGHT SWITCHES, ELECTRICAL, RECP/FACEL, HVAC, FIRE EXTINGUISHER, ALARMS... TO ENSURE PROPER FIT OF FURNITURE.

**\* CODE NOTES \***

KI HAS PREPARED THESE PLANS IN ACCORDANCE WITH REQUIREMENTS AND INSTRUCTIONS PROVIDED BY THE OWNER/ARCHITECT/CONTRACTOR. THE MATTERS IDENTIFIED BELOW ARE AREAS IN WHICH THESE REQUIREMENTS AND/OR INSTRUCTIONS DO NOT COMPLY WITH THE IDENTIFIED CODE, STANDARD, OR RECOMMENDATION. APPROVAL OF THESE PLANS BY THE OWNER/ARCHITECT/CONTRACTOR CONSTITUTES AGREEMENT THAT KI SHALL SUFFER NO LIABILITY FOR ANY CLAIMS, DAMAGES, OR OTHER HARM CAUSED BY SUCH NON-COMPLIANCE.

1 THE QUANTITY OF WHEELCHAIR SPACES IN THIS ROOM DOES NOT COMPLY WITH IBC 118.2.1 WHICH INDICATES THAT SEATING CAPACITIES OF 4 TO 25 REQUIRE 1 WHEELCHAIR SPACES (& CORRESPONDING COMPANION SEATS).

2 KI TYPICALLY PLANS WHEELCHAIR SPACES PER IBC AND LOCAL CODES HOWEVER THEY HAVE NOT BEEN PLANNED ON THIS LAYOUT. PLEASE VERIFY ALL ACCESSIBILITY REQUIREMENTS PER LOCAL CODE AND COMMUNICATE ALL WHEELCHAIR SPACE LOCATIONS TO KI. ADDING WHEELCHAIR SPACES MAY REDUCE OVERALL SEATING QUANTITIES.

NOTE: SYMBOL KEY  
# NOTE NUMBER  
# CODE VIOLATION # RECOMMENDATION

**REPRESENTATIVE:**  
DEALER:  
ORDER NUMBER:  
DATE: 09/14/2022  
SFC: 801204  
REVISIONS:  
NO. DATE BY DESCRIPTION  
CSB A001

**DRAWN BY:** SCALE: 1/4" = 1'-0"  
**DRAWING No.:** D01204\_00\_00\_L02\_L  
**SHEET:** Basement

THIS PLAN IS NOT INTENDED TO BE USED FOR BUILDING CONSTRUCTION

**DRAWING REVIEW**  
These Plans are intended to comply with the contract. As such, these Plans must be reviewed by the Owner/Architect/Contractor, or other appropriate representative, if it is to proceed with project. It is the responsibility of the Contractor to verify and complete the information at the bottom of the page and return this document to KI. If these Plans are to be corrected, note the "Revised and Resubmitted" box below, include and complete return this document to KI. Authorized signature indicates review of these Plans. Below signature print name, title, company or affiliation, and date. Signature of product owner, if not authorized signature is received is complete and authorized signature is received.

It is the Owner/Architect/Contractor's responsibility to verify that all conditions have changed or are furniture layout after completed field verified dimensions have been obtained.

APPROVED AS NOTED:   
REVISE AND RESUBMIT:

SIGNATURE: \_\_\_\_\_  
PRINT: \_\_\_\_\_  
COMPANY: \_\_\_\_\_  
DATE: \_\_\_\_\_

**KI WALL DEPT USE ONLY**  
 FIELD APPROVAL  
 DRAWING APPROVAL  
 WPC/ARCH/ONS  
 ALUPT COMPLETE

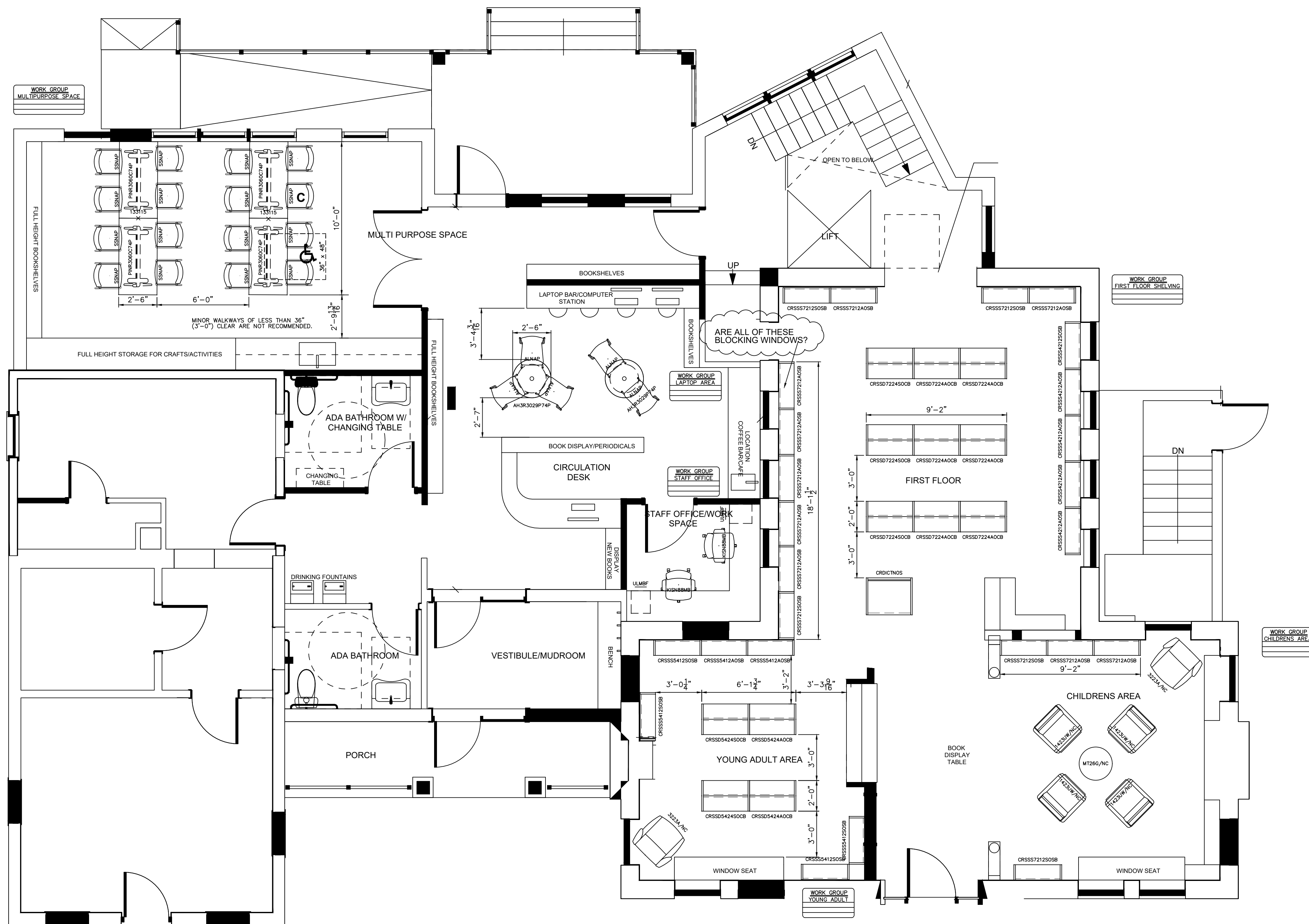
**PROJECT TITLE:**  
CORNISH LIBRARY  
& COMMUNITY CENTER  
MAYOR KENNEDY ARCHITECTS

**FLOOR/AREA:**  
LIBRARY

**PRODUCT LINE:**  
CROSSROADS  
Loose Seating  
Lobby/Lounge  
Loose Tables

FIRST FLOOR

BUILDING SHELL HAS BEEN CONVERTED FROM PDF AND MAY NOT BE ACCURATE.  
CONFIRM ALL ROOM DIMENSIONS TO ENSURE PROPER FIT OF FURNITURE



WORKGROUP-CHILDRENS AREA			
ITEM	QTY	PART NUMBER	DESCRIPTION
1	4	14323W/NC	LYRA PARLOR CHAIR,PH BACK,MD LEG BASE,NON-CONTRAST,29X30"
2	1	3223/NC	AFFINA HIGH BACK CLOSED ARM LOUNGE CHAIR,NON-CONTRAST
3	2	CRSS57212A-O-PSTR:BP	CROSSROADS 72"H METAL SHELVING ADDER-SINGLE FACE,120X36-1/2"W,OAK
4	2	CRSS57212S-O-PSTR:BP	CROSSROADS 72"H METAL SHELVING STARTER-SINGLE FACE,120X37-1/2"W,OAK
5	1	MPT26R/CGL/NC	MTPFACE 26" ROUND TABLE,CONCEALED GUIDES,NON-CONTRAST

WORKGROUP-FIRST FLOOR SHELVING			
ITEM	QTY	PART NUMBER	DESCRIPTION
1	1	CRSD7N-O-PSTR	CROSSROADS DICTIONARY STAND,290X36W45"H,OAK
2	6	CRSSD7224A-O-PSTR:BP	CROSSROADS 72"H METAL SHELVING ADDER-DOUBLE FACE,240X36-1/4"W,OAK
3	3	CRSSD7224S-O-PSTR:BP	CROSSROADS 72"H METAL SHELVING STARTER-DOUBLE FACE,240X37-1/2"W,OAK
4	4	CRSS4212A-O-PSTR:BP	CROSSROADS 42"H METAL SHELVING ADDER-SINGLE FACE,120X36-1/4"W,OAK
5	1	CRSS4412S-O-PSTR:BP	CROSSROADS 42"H METAL SHELVING STARTER-SINGLE FACE,120X37-1/2"W,OAK
6	7	CRSS57212A-O-PSTR:BP	CROSSROADS 72"H METAL SHELVING ADDER-SINGLE FACE,120X36-1/4"W,OAK
7	3	CRSS57212S-O-PSTR:BP	CROSSROADS 72"H METAL SHELVING STARTER-SINGLE FACE,120X37-1/2"W,OAK

WORKGROUP-LAPTOP AREA			
ITEM	QTY	PART NUMBER	DESCRIPTION
1	2	AH3R3029P-74P	ATHENS ROUND TABLE,3" COLUMN,22" BASE,POWDERCOAT,29"H,30"DIA,74P
2	5	ALNAP	APPLY 4-LEG CHAIR,WOOD LAMINATE SHELL

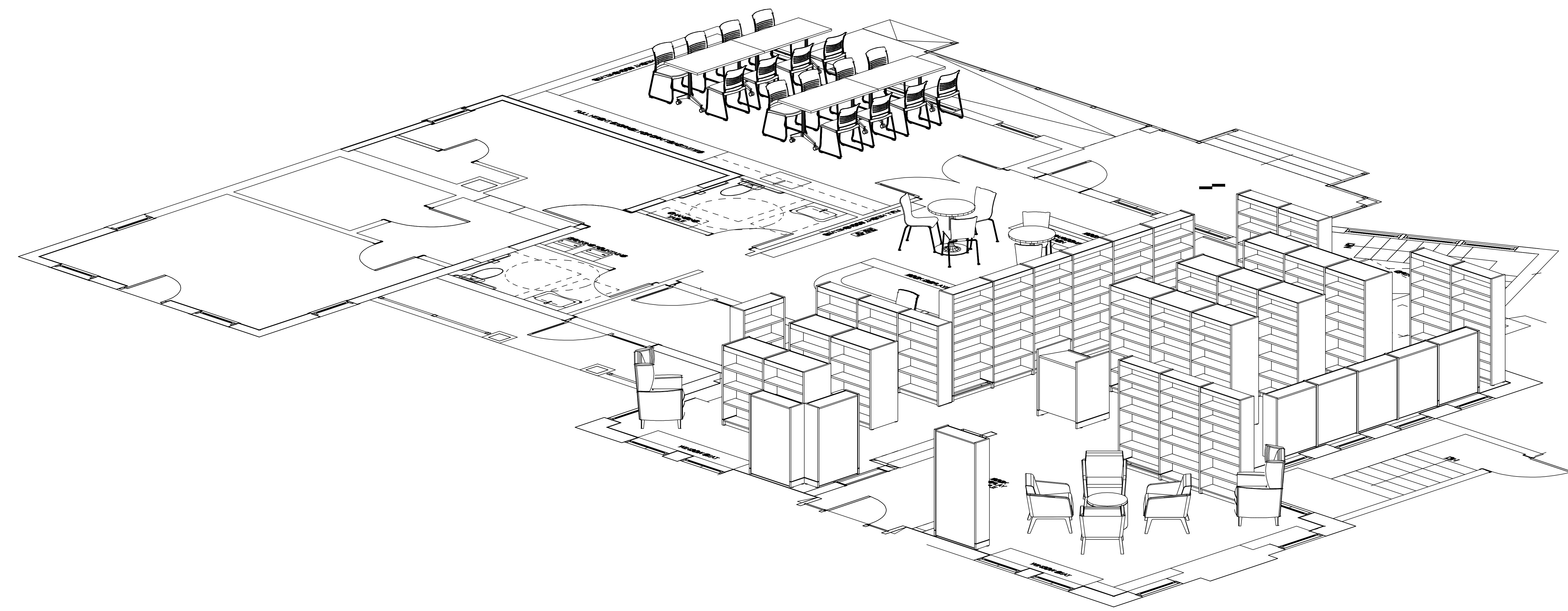
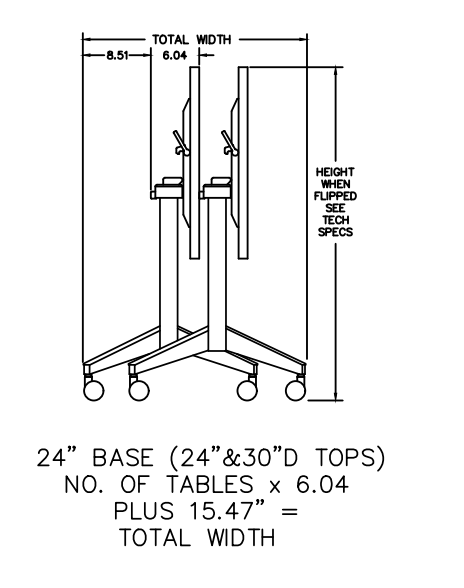
WORKGROUP-MULTIPURPOSE SPACE			
ITEM	QTY	PART NUMBER	DESCRIPTION
1	2	13311S	TABLE GANGER (SET OF 2 FOR ONE TABLE TO-TABLE GANG)
2	4	PNR360C74P	PHIBETTE/NESTING COLLABORATIVE,RECTANGULAR,36X60",74P,EDGE
3	16	SSNAP	STRIVE SLED BASE ARMLESS CHAIR,POLY

WORKGROUP-STAFF OFFICE			
ITEM	QTY	PART NUMBER	DESCRIPTION
1	2	KISN8MB	(2) SONA ADVANCED SYNCHROTELL TASK CHAIR, MESH BACK, 1D A
2	2	ULP20MBF	U-SERIES MOBILE PEDESTAL,BOX/FILE,20" NOMINAL DEPTH

WORKGROUP-YOUNG ADULT			
ITEM	QTY	PART NUMBER	DESCRIPTION
1	1	3223/NC	AFFINA HIGH BACK CLOSED ARM LOUNGE CHAIR,NON-CONTRAST
2	2	CRSS5444A-O-PSTR:BP	CROSSROADS 54"H METAL SHELVING ADDER-DOUBLE FACE,240X36-1/4"W,OAK
3	2	CRSS5444S-O-PSTR:BP	CROSSROADS 54"H METAL SHELVING STARTER-DOUBLE FACE,240X37-1/2"W,OAK
4	2	CRSS5412A-O-PSTR:BP	CROSSROADS 54"H METAL SHELVING ADDER-SINGLE FACE,120X36-1/4"W,OAK
5	4	CRSS5412S-O-PSTR:BP	CROSSROADS 54"H METAL SHELVING STARTER-SINGLE FACE,120X37-1/2"W,OAK



**CONFIDENTIALITY**  
This Plan is the confidential property of Mayor Kennedy Architects, Inc. and contains information that is not to be used, copied, reproduced, distributed, or otherwise made available to any third party without the written consent of Mayor Kennedy Architects, Inc. in whole or in part.

**FIELD VERIFICATION**  
This Plan incorporates building information compiled from various sources associated with this project. It is the responsibility of the user to verify the accuracy of the information on site. Conditions directly affecting the product or its installation must be field verified.

**CODE REQUIREMENTS**  
All specify create Plans based upon an interpretation of applicable portions of the 2021 International Building Code (IBC) as amended. All building codes and standards (such as country, industry, and/or manufacturer) shall be clearly identified in the Plans. As a result of manufacturing variations in the country one party is disavowed any responsibility or liability to ensure that the Plan complies with the applicable code requirements. It is the responsibility of the user to ensure that the Plan complies with the applicable code requirements. Approval of the Plan shall include agreement to the drawings.

**NOTES**  
All requirements of these Plans and the resulting items are reviewed with all local building codes. It is the responsibility of the user to ensure that any non-compliance with local building codes.

---

THIS PLAN IS NOT INTENDED TO BE USED FOR BUILDING CONSTRUCTION

**DRAWING REVIEW**  
These Plans are intended to comply with the contract. As such, these Plans must be reviewed by the Owner/Architect/Contractor, or other appropriate representative, if it is to proceed with product installation in accordance with these Plans. It is the responsibility of the user to ensure that the information at the bottom of this page and return this document to KI. If these Plans are to be corrected, mark the "Revised and Resubmit" box below, include and complete information on the bottom of this page and return this document to KI. Authorized signature indicates name of these Plans. Below signature print name, title, company or affiliation, and date. Manufacturer of product shown, if not otherwise stated, is the manufacturer of the product. If not otherwise stated, the manufacturer is the manufacturer of the product.

APPROVED AS NOTED:   
REVISE AND RESUBMIT:

SIGNATURE: \_\_\_\_\_  
PRINT: \_\_\_\_\_  
COMPANY: \_\_\_\_\_  
DATE: \_\_\_\_\_

**KI WALL DEPT USE ONLY**  
 FIELD APPROVAL  
 DRAWING APPROVAL  
 REVISIONS ONLY  
 ALREADY COMPLETE

**PROJECT TITLE:**  
CORNISH LIBRARY & COMMUNITY CENTER  
MAYOR KENNEDY ARCHITECTS

**FLOOR/AREA:**  
BRARY

**PRODUCT LINE:**  
CROSSROADS  
Loose Seating  
Lobby/ Lounge  
Loose Tables

**REPRESENTATIVE:**  
MIGUEL SIKI

**DEALER:**

**ORDER NUMBER:**  
SFDC: 801204

**DATE:**  
09/14/2022

**REVISIONS:**

NO.	DATE	BY	DESCRIPTION

CSB: AUST

**DRAWN BY:** SCALE: 1/4" = 1'-0"  
DCS

**DRAWING No.:** DB01204\_00\_00\_L02\_L

**SHEET:** 1st of 1

## Quote

Thank you for allowing Hertz to quote your furniture. This quote is valid for 15 days. When you are ready to place your order, please sign the final page and return this entire document to me.  
Please let me know if you have any questions.

Quote for delivery to:

**George H. Stowell Free Library**  
**School Street**  
**Cornish Flat, NH 03746**

### Questions? Please Contact...

NH Regional Sales Manager

**Dano Anderson**  
dano@schoolfurnishings.com  
**O: 603-882-9418**  
**C: 603-548-8630**

Customer Support Rep

**Jennifer Morani**  
j.morani@schoolfurnishings.com  
603-882-9418

## Quote Details

### Mayor Kennedy Layout ACTIVITY CRAFT SPACE



**Ruckus,48x54"Double-Faced,2x2  
Cubby Storage,w/Doors**

Model #999  
LAMINATE: TBD  
EDGE: TBD  
BAG HOOKS: 4  
BASE COLOR: TBD  
DOOR COLOR: TBD  
PULL OPTION: TBD  
STD LOCK OPTION: TBD

\$2,106.09/unit  
Qty. 2  
**\$4,212.18**

**Custom item:** This item may not be cancelled or returned.



**Strive Four-Leg Armless Cafe  
Stool,Poly**

Model #999  
SEAT HEIGHT: 24"  
FRAME COLOR: TBD  
POLY SEAT/BACK COLOR: TBD  
GLIDE OPTION: TBD

\$238.77/unit  
Qty. 8  
**\$1,910.16**

**Custom item:** This item may not be cancelled or returned.

### CHILDRENS AREA





**Lyra Parlor Chair,Uph Back,Wd Leg Base,NonContrast,29x29D"**

Model #999

LYRA FABRIC: GRADE H TBD

WOOD LEG: WOOD FINISH CORE

WOODFIN: KENSINGTON MAPLE ON MAPLE

\$2,494.80/unit

Qty. 4

**\$9,979.20**

**Custom item:** This item may not be cancelled or returned.



**Affina High Back Closed Arm Lounge Chair,Non-Contrast**

Model #999

FABRIC: GRADE H TBD

WOOD FINISH: CORE

WOODFIN: KENSINGTON MAPLE ON MAPLE

GLIDES: TBD

WINGBACK: WITH WINGBACK

WOOD ARMCAPS: PAIR

Qty. 1

**\$3,220.56**

**Custom item:** This item may not be cancelled or returned.



**CrossRoads 72"H Metal Shelving Adder-Single Face,12Dx361/4"W**

Model #999

TYPE: OAK

END PANEL: STRAIGHT

WOOD FINISH: MEDIUM ON OAK

METAL SHELF PAINT: TBD

BACK PANEL: YES

SHELF TYPE: TBD

\$1,067.85/unit

Qty. 2

**\$2,135.70**

**Custom item:** This item may not be cancelled or returned.



**CrossRoads 72"H Metal Shelving Starter-Single Face,12Dx371/2**

Model #999

TYPE: OAK

END PANEL: STRAIGHT PANEL

WOOD FINISH: MEDIUM ON OAK

METAL SHELF PAINT COLOR: TBD

BACK PANEL: YES

SHELF TYPE: TBD

\$1,293.39/unit

Qty. 2

**\$2,586.78**

**Custom item:** This item may not be cancelled or returned.



**MyPlace 26" Round Table, Concealed Glides,Non-Contrast**

Model #999

FABRIC: GRADE H TBD

LAMINATE: TBD

74P EDGE COLOR: TD

Qty. 1

**\$768.60**

**Custom item:** This item may not be cancelled or returned.

FIRST FLOOR SHELVING



**CrossRoads Dictionary Stand,  
29Dx36Wx45"H,Oak**

Model #999  
END PANEL: STRAIGHT PANEL  
WOOD FINISH: MEDIUM ON OAK  
SURFACE FINISH: TBD

Qty. 1  
**\$2,152.71**

**Custom item:** This item may not be cancelled or returned.



**CrossRoads 72"H Metal Shelving  
Adder-Double Face,24Dx361/4"W**

Model #999  
TYPE: OAK  
END PANEL: STRAIGHT PANEL  
WOOD FINISH: MEDIUM ON OAK  
METAL SHELF PAINT: TBD  
BACK PANEL: YES

\$1,724.94/unit  
Qty. 6  
**\$10,349.64**

**Custom item:** This item may not be cancelled or returned.



**CrossRoads 72"H Metal Shelving  
Starter-Double Face,24Dx371/2**

Model #999  
TYPE: OAK  
END PANEL: STRAIGHT PANEL  
WOOD FINISH: MEDIUM ON OAK  
METAL SHELF PAINT: TBD  
BACK PANEL: YES

\$2,057.58/unit  
Qty. 3  
**\$6,172.74**

**Custom item:** This item may not be cancelled or returned.



**CrossRoads 42"H Metal Shelving  
Adder-Single Face,12Dx361/4"W**

Model #999  
TYPE: OAK  
END PANEL: STRAIGHT PANEL  
WOOD FINISH: MEDIUM ON OAK  
METAL SHELF PAINT: TBD  
BACK PANEL: YES  
SHELF TYPE:

\$769.23/unit  
Qty. 4  
**\$3,076.92**

**Custom item:** This item may not be cancelled or returned.



**CrossRoads 42"H Metal Shelving  
Starter-Single Face,12Dx371/2**

Model #999  
TYPE: OAK  
END PANEL: STRAIGHT PANEL  
WOOD FINISH: MEDIUM ON OAK  
METAL SHELF PAINT: TBD  
BACK PANEL: YES  
SHELF TYPE: TBD

Qty. 1  
**\$921.06**

**Custom item:** This item may not be cancelled or returned.



**CrossRoads 72\"H Metal Shelving  
Adder-Single Face,12Dx361/4\"W**

Model #999

TYPE: OAK

END PANEL: STRAIGHT PANEL

WOOD FINISH: MEDIUM ON OAK

METAL SHELF PAINT: TBD

BACK PANEL: YES

SHELF TYPE: TBD

\$1,067.85/unit

Qty. 7

**\$7,474.95**

**Custom item:** This item may not be cancelled or returned.



**CrossRoads 72\"H Metal Shelving  
Starter-Single Face,12Dx371/2**

Model #999

TYPE: OAK

END PANEL: STRAIGHT PANEL

WOOD FINISH: MEDIUM ON OAK

METAL SHELF PAINT: TBD

BACK PANEL: YES

SHELF TYPE: TBD

\$1,293.39/unit

Qty. 3

**\$3,880.17**

**Custom item:** This item may not be cancelled or returned.

LAPTOP AREA



**Athens Round Table,3\"Column,  
22\" BASE, 29'H 30'D**

Model #999

EDGE: TBD

SURFACE: TBD

BASE/COLUMN FINISH: TBD

\$534.87/unit

Qty. 2

**\$1,069.74**

**Custom item:** This item may not be cancelled or returned.



**Apply 4-Leg Chair,Wood  
Laminate Shell**

Model #999

FRAME: TBD

LAMINATE: TBD

GLIDE: TBD

\$297.36/unit

Qty. 5

**\$1,486.80**

**Custom item:** This item may not be cancelled or returned.

MULTIPURPOSE SPACE



**Table Ganger (Set Of 2 For One  
Table-To-Table Gang)**

Model #999

\$10.71/unit

Qty. 2

**\$21.42**

**Custom item:** This item may not be cancelled or returned.



**Pirouette, Nesting Collaborative, Rectangular, 30x60", 74P Edge**

Model #999  
EDGE: TBD  
LAMINATE: TBD  
LEG FINISH: TBD  
CASTERS/GLIDE: TBD

\$922.95/unit  
Qty. 4  
**\$3,691.80**

**Custom item:** This item may not be cancelled or returned.



**Strive Sled Base Armless Chair, Poly**

Model #999  
FRAME: TBD  
POLY SEAT/BACK: TBD  
GLIDE: TBD

\$182.07/unit  
Qty. 16  
**\$2,913.12**

**Custom item:** This item may not be cancelled or returned.

STACKS



**CrossRoads 60"H Metal Shelving Adder-Double Face, 24Dx361/4"**

Model #999  
TYPE: OAK  
END PANEL: STRAIGHT PANEL  
WOOD FINISH: MEDIUM ON OAK  
METAL SHELF PAINT: TBD  
BACK PANEL: YES  
SHELF TYPE: TBD

\$1,461.60/unit  
Qty. 6  
**\$8,769.60**

**Custom item:** This item may not be cancelled or returned.



**CrossRoads 60"H Metal Shelving Starter-Double Face, 24Dx371/2"**

Model #999  
TYPE: OAK  
END PANEL: STRAIGHT PANEL  
WOOD FINISH: MEDIUM ON OAK  
METAL SHELF PAINT: TBD  
BACK PANEL: YES  
SHELF TYPE: TBD

\$1,734.39/unit  
Qty. 3  
**\$5,203.17**

**Custom item:** This item may not be cancelled or returned.



**CrossRoads 60"H Metal Shelving Adder-Single Face, 12Dx361/4"W**

Model #999  
TYPE: OAK  
END PANEL: STRAIGHT PANEL  
WOOD FINISH: MEDIUM ON OAK  
BACK PANEL: YES  
SHELF TYPE: TBD

\$931.77/unit  
Qty. 20  
**\$18,635.40**

**Custom item:** This item may not be cancelled or returned.



**CrossRoads 60"H Metal Shelving  
Starter-Sngl Face,12Dx371/2"w**

Model #999

TYPE: OAK

END PANEL: STRAIGHT PANEL

WOOD FINISH: MEDIUM ON OAK

METAL SHELF PAINT: TBD

END PANEL: YES

SHELF TYPE: TBD

\$1,123.29/unit

Qty. 5

**\$5,616.45**

**Custom item:** This item may not be cancelled or returned.

STAFF OFFICE



**Signia Advanced Synchronit  
Task Chair, Mesh Back, 1D Arm**

Model #999

BACK MESH: TBD

LUMBAR OPTION: TBD

BASE/FRAME: BLACK

BACKREST/ARM FRAME COLOR: TBD

CASTER OPTION: TBD

UPHOLSTERY: PALLAS FABRIC P1 TBD

\$720.72/unit

Qty. 2

**\$1,441.44**

**Custom item:** This item may not be cancelled or returned.



**U-Series Mobile Pedestal,Box/  
File,20"Nominal Depth**

Model #999

PAINT COLOR: STARLIGHT SILVER METALLIC

LOCK OPTION: TBD

PULL STYLE: TBD

\$320.04/unit

Qty. 2

**\$640.08**

**Custom item:** This item may not be cancelled or returned.

YOUNG ADULT



**Affina High Back Closed Arm  
Lounge Chair,Non-Contrast**

Model #999

FABRIC: GRADE H TBD

WOOD FINISH: CORE

WOOFIN: KENSINGTON MAPLE ON MAPLE

GLIDES: TBD

WINGBACK: YES

WOOD ARMCAPS: PAIR

Qty. 1

**\$3,220.56**

**Custom item:** This item may not be cancelled or returned.



**CrossRoads 54"H Metal Shelving  
Adder-Double Face,24Dx361/4"W**

Model #999

TYPE: OAK

END PANEL: STRAIGHT PANEL

WOOD FINISH: MEDIUM ON OAK

METAL SHELF PAINT: TBD

BACK PANEL: YES

SHELF TYPE: TBD

\$1,378.44/unit

Qty. 2

**\$2,756.88**

**Custom item:** This item may not be cancelled or returned.





**CrossRoads 54"H Metal Shelving  
Starter-Double Face,24Dx371/2**

Model #999

TYPE: OAK

END PANEL: STRAIGHT PANEL

WOOD FINISH: MEDIUM ON OAK

METAL SHELF PAINT: TBD

BACK PANEL: YES

SHELF TYPE: TBD

\$1,636.74/unit

Qty. 2

**\$3,273.48**

**Custom item:** This item may not be cancelled or returned.



**CrossRoads 54"H Metal Shelving  
Adder-Single Face,12Dx361/4"W**

Model #999

TYPE: OAK

END PANEL: STRAIGHT PANEL

WOOD FINISH: MEDIUM ON OAK

METAL SHELF PAINT: TBD

BACK PANEL: YES

SHELF TYPE: TBD

\$883.26/unit

Qty. 2

**\$1,766.52**

**Custom item:** This item may not be cancelled or returned.



**CrossRoads 54"H Metal Shelving  
Starter-Single Face,12Dx371/2**

Model #999

TYPE: OAK

END PANEL: STRAIGHT PANEL

WOOD FINISH: MEDIUM ON OAK

METAL SHELF PAINT: TBD

BACK PANEL: YES

SHELF TYPE: TBD

\$1,062.81/unit

Qty. 4

**\$4,251.24**

**Custom item:** This item may not be cancelled or returned.

**Notes:**

**Tailgate Delivery Charge**

**\$0.00**

Quote billing address:

**George H. Stowell Free Library  
School Street  
Cornish Flat, NH 03746**

**Subtotal:**

\$123,599.07

Taxes:

\$0.00

**Total:**

**\$123,599.07**

--

**THANK YOU FOR THE OPPORTUNITY TO QUOTE YOUR FURNITURE.**

## Terms and Conditions

We do our best to make sure that your order is correct. Please review this order to confirm that the model number, color, quantity, size, and price are all correct. If all the information is accurate, please sign and return to me by email. If there is a discrepancy, please call Dan Anderson at 603-882-9418 so that we may correct the error and process your order.

### 1. Know Your Shipping Methods:

- a. **Tailgate delivery** - The truck driver is only responsible to move the furniture to the tailgate (back) of the truck. You are responsible to unload the furniture from the truck and carry it into your building.
- b. **Liftgate Delivery\*** - Recommended for heavier or larger shipments. A liftgate (a steel elevator-like platform at the end of the truck) is used to lower the merchandise off the truck down to the street level, so you don't have to do it yourself.
- c. **Assisted Inside Delivery\*** - The truck driver will help you offload the goods from the truck and bring them into the first dry area of your building.
- d. **Notify Before Delivery\*\*** - When a shipment is ready to ship, the trucking company will call you within approximately 24 hours to arrange for a convenient time for the delivery

**\*Liftgate Delivery and Assisted Inside Delivery are available for an additional charge. If you do not order these services in advance and then request them from the freight company at the time of delivery, or if a redelivery will be required, you will be responsible for any additional charges incurred.**

**\*\*Notify Before Delivery is available for an additional charge. Unless you request this service, you will not be notified about the delivery ahead of time. If you're not available to accept the delivery, you will be responsible for redelivery charges.**

### 2. Steps to take at time of delivery to protect against loss or damage:

- a. **Verify count** - Make sure you are receiving as many cartons as are listed on the delivery receipt. If any shortage is discovered, note exactly how many cartons are short on the carrier's delivery receipt and have the driver note the shortage on your copy.
- b. **Carefully examine each carton for damage** - If damage is visible, note this fact on the delivery receipt and please be specific with your notations (for example, cartons crushed or carton has a hole in it). If the cartons are severely damaged, do not accept the shipment. The customer has a right to accept partial shipments and refuse the remaining damaged units. If a carton has appearances that the contents inside may possibly be damaged, insist that it be opened right at that time, and both you and the driver should make a joint inspection of the contents. Any such concealed damage should likewise be noted on the delivery receipt and on your copy. Be sure to retain your copy. Hertz Furniture should be advised immediately. Please contact our Customer Service department at 800-526-4677 option 4.
- c. **Immediately after delivery, open all cartons and inspect for concealed damage** - Even though the driver has already left, all cartons should immediately be opened, and the contents inspected for possible concealed damage. Hertz Furniture will only accept responsibility for damage reported within 5 days from delivery.

**3. Steps to take when visible or concealed damage is discovered:**

- a. **Retain damaged items** - Not only must damaged items be held at the point where they are received, but the cartons and all inner packing materials must be held until an inspection is made by a carrier inspector.
- b. **Report concealed damage to Hertz Furniture immediately** upon the discovery of damage that could not have been determined at time of delivery. Failure to report damages within 5 days will affect replacements of the damaged merchandise and the outcome of the claim.
- c. **Document all your correspondence in writing** - Pictures of the damaged cartons as well as their contents are required. This documentation will enable Hertz Furniture to settle the freight claims more efficiently and rapidly.

**4. Document all your correspondence in writing** - Pictures of the damaged containers as well as the contents in the containers are required. This documentation will enable Hertz Furniture to settle the freight claims more efficiently and rapidly.

**5. Steps to take when carrier makes inspection of damaged items:**

- a. **Have damaged items in receiving area** - Make certain the damaged items have not been moved from the receiving area prior to discovery of the damage. Allow the inspector to inspect damaged items, cartons, inner packing materials and freight bill. Be sure to retain your delivery receipt - it will be needed as a supporting document when the claim is filed.
- b. **After the inspector fills out inspection report, carefully read it before signing** - If you do not agree with any facts or conclusions made by the inspector on the report, do not sign it. Unless repairs will be completely satisfactory, be sure the inspector requests replacement on the inspection report.
- c. **Forward your copy of the inspection report and delivery receipt to Hertz Furniture** - Call our Customer Service department at 800-526-4677 option 4 for further instructions. A freight claim will be filed on your behalf. Should you choose to do so, you may file your own claim. Hertz Furniture will take no responsibility should your claim be declined.

**6. Steps to take after inspection has been made:**

**The damaged merchandise must be held in original cartons** - Hertz Furniture will advise you of the disposition of the damaged unit when the claim is settled. The customer must make the product available for salvage pick up.

**7. Order Cancellation:**

An order may be canceled, but only before the order has been sent to production. In some cases, cancellations can be accepted even after the order is in production, but additional fees (restocking and/or cancellation) will be billed to your account.

If the order has already shipped, we can no longer cancel the order.

To confirm that your order has been canceled, we will send you a cancellation notice. Only then will the cancellation be in effect.

Custom orders (including many upholstered items) are non-cancelable.

**8. Returns:**

A return authorization must be issued before returning any merchandise. A restocking charge, as well as round trip freight charges, will be charged.

All items must be in the original carton, unassembled and unused. Please note that returns cannot be made after the product has been assembled. Custom orders are non-returnable. Many products (e.g. upholstered items) are considered custom items and are non-returnable. Please call us at 800-526-4677 for details.

Returns cannot be made after 30 days.

**9. Payment:**

Payment is due 30 days after the date of invoice, less any amount requested by Hertz Furniture as a deposit at time of order. The customer is required to pay for products received, but not for products that are on backorder.

Delinquent accounts are subject to a 1.5% monthly interest fee and in accordance with the Halachic Guidelines of Heter Iska and shall pay all collections costs. If Hertz Furniture is required to initiate any legal proceedings to enforce collection of the sums due from customer, the prevailing party in such litigation shall be entitled to recover its attorney's fees and costs incurred therein.

The invoice is due and payable in Ramsey, Bergen County, New Jersey. Jurisdiction for all legal issues will be the court system of the State of New Jersey.

Hertz Furniture reserves the right to make any and all changes to its website at its sole discretion without notice to the User. Hertz Furniture reserves the right to deny access to its website to anyone at any time. This Agreement shall be deemed to include all other notices, policies, disclaimers, and other terms contained in its website; provided, however, that in the event of a conflict between such other terms and the terms of this Agreement, the terms of this Agreement shall control.

This Agreement is governed by the laws of the State of New Jersey, USA, without reference to conflicts of laws provisions. User consents to the exclusive jurisdiction and venue of courts in Bergen County, New Jersey, U.S.A. in all disputes arising out of or relating to this agreement or use of the website. Use of the website is unauthorized in any jurisdiction that does not give effect to all provisions of these terms and conditions, including without limitation this paragraph.

Any rights not expressly granted herein are reserved.

I have read, understand, and accept this Quotation set forth above and the terms and conditions attached hereto. I further understand that, by signing and returning to Hertz Furniture a copy of this Quotation, CUSTOMER is entering into a contract with Hertz Furniture Systems, LLC (dba Hertz Furniture) to purchase the items set forth in this Quotation on the terms set forth herein and in the "Terms and Conditions" set forth herein and is further granting to Hertz Furniture Systems, LLC a lien on the items set forth in this Quotation as collateral for the obligations of CUSTOMER pursuant hereto, including payment to Hertz Furniture Systems, LLC, and consents to Hertz Furniture Systems LLC's filing of a UCC-1 Financing Statement with the appropriate governmental agency to perfect said lien.

**CUSTOMER**

**George H. Stowell Free Library**  
**School Street**  
**Cornish Flat, NH 03746**

--

**Quote # 686070**

Signature: \_\_\_\_\_ Name: \_\_\_\_\_

Title: \_\_\_\_\_ Date: \_\_\_\_\_

Alt Phone # (Mobile / Work / Personal) \_\_\_\_\_







## Quote

Thank you for allowing Hertz to quote your furniture. This quote is valid for 15 days. When you are ready to place your order, please sign the final page and return this entire document to me.  
Please let me know if you have any questions.

Quote for delivery to:

**George H. Stowell Free Library**  
**School Street**  
**Cornish Flat, NH 03746**

### Questions? Please Contact...

NH Regional Sales Manager

**Dano Anderson**  
dano@schoolfurnishings.com  
**O: 603-882-9418**  
**C: 603-548-8630**

Customer Support Rep

**Jennifer Morani**  
j.morani@schoolfurnishings.com  
603-882-9418

## Quote Details

### BANWELL LAYOUT

### ART DISPLAY



**CrossRoads Dictionary Stand,  
29Dx36Wx45"H,Oak**

Model #999  
END PANEL: STRAIGHT  
WOOD FINISH: MEDIUM ON OAK  
SURFACE: TBD

\$2,152.71/unit  
Qty. 2  
**\$4,305.42**

**Custom item:** This item may not be cancelled or returned.



**CrossRoads 60\"/>**

Model #999  
TYPE: OAK  
END PANEL: STRAIGHT  
WOOD FINISH: MEDIUM ON OAK  
METAL SHELF PAINT: TBD  
BACK PANEL: YES  
SHELF TYPE: TBD

\$931.77/unit  
Qty. 5  
**\$4,658.85**

**Custom item:** This item may not be cancelled or returned.



**CrossRoads 60\"H Metal Shelving  
Starter-Single Face,12Dx371/2**

Model #999

TYPE: OAK

END PANEL: STRAIGHT

WOOD FINSH: MEDIUM ON OAK

METAL SHELF PAINT: TBD

BACK PANEL: YES

SHELF TYPE: TBD

\$1,123.29/unit

Qty. 3

**\$3,369.87**

**Custom item:** This item may not be cancelled or returned.

CHILDRENS AREA

**CUSTOM**

**Modified-CrossRoads 42\"H Metal  
Shelving Starter-DoubleFace**

Model #999

SIZE: 24X37 1/2 OAK

END PANEL: STRAIGHT

WOOD FINISH: MEDIUM ON OAK

METAL SHELF PAINT: SAND

BACK PANEL: YES

SHELF TYPE: TBD

CASTERS: YES

BASE DIM: 42\"H

\$2,271.15/unit

Qty. 5

**\$11,355.75**

**Custom item:** This item may not be cancelled or returned.



**CrossRoads 60\"H Metal Shelving  
Adder-Single Face,12Dx361/4\"W**

Model #999

TYPE: OAK

END PANEL: STRAIGHT

WOOD FINISH: MEDIUM ON OAK

METAL SHELF PAINT: TBD

BACK PANEL: YES

SHELF TYPE: TBD

\$931.77/unit

Qty. 4

**\$3,727.08**

**Custom item:** This item may not be cancelled or returned.



**CrossRoads 60\"H Metal Shelving  
Starter-Single Face,12Dx371/2**

Model #999

TYPE: OAK

END PANEL: STRAIGHT

WOOD FINISH: MEDIUM ON OAK

METAL SHELF PAINT: TBD

BACK PANEL: YES

SHELF TYPE: TBD

\$1,123.29/unit

Qty. 2

**\$2,246.58**

**Custom item:** This item may not be cancelled or returned.



**MyPlace 18\" Round,Concealed  
Glides,Non-Contrast**

Model #999

FABRIC: GRADE H TBD

\$503.37/unit

Qty. 3

**\$1,510.11**

**Custom item:** This item may not be cancelled or returned.



**Ricochet Stool,16" Two-Tone Poly**

Model #999

SEAT/BASE COLOR: TBD

COLUMN COLORT: TBD

SEAT PAD/RING COLOR: TBD

\$129.78/unit

Qty. 2

**\$259.56**

**Custom item:** This item may not be cancelled or returned.



**Ricochet Stool,18" Two-Tone Poly**

Model #999

SEAT/BASE COLOR: TBD

COLUMN COLORT: TBD

SEAT PAD/RING COLOR: TBD

\$134.19/unit

Qty. 3

**\$402.57**

**Custom item:** This item may not be cancelled or returned.



**Ruckus,48x54" Double-Faced,2x2 Cubby Storage,w/**

Model #999

LAMINATE: TBD

EDGE: TBD

BAG HOOKS: 4

BASE COLOR: TBD

DOOR COLOR: TBD

PULL OPTION: TBD

STND LOCK OPTION: TBD

\$2,106.09/unit

Qty. 2

**\$4,212.18**

**Custom item:** This item may not be cancelled or returned.



**Ruckus,Tote Storage,Tall,3-Column unit,w/Doors,w/Laminate**

Model #999

SIZE: 44WX18DX42H

TOTES: 15 3" & 6 6"

PULL OPTION: TBD

STORAGE BASE: TBD

SURFACE: TBD

EDGE: TBD

PAINT: TBD

DOOR: TBD

LOCK: TBD

Qty. 1

**\$1,642.41**

**Custom item:** This item may not be cancelled or returned.



**Strive Four-Leg Armless Cafe Stool,Poly**

Model #999

SEAT HEIGHT: 24"

FRAME COLOR: TBD

POLY SEAT & BACK COLOR: TBD

GLIDE OPTION: TBD

\$238.77/unit

Qty. 8

**\$1,910.16**

**Custom item:** This item may not be cancelled or returned.

LIBRARY



**a Parlor Small End Table,Lam Top,Wood Leg Base,20x20D"**

Model #999  
WOOD LEG: KENSINGTON MAPLE ON MAPLE  
LAMINATE: TBD

\$817.11/unit  
Qty. 8  
**\$6,536.88**

**Custom item:** This item may not be cancelled or returned.



**Lyra Parlor Chair,Uph Back,Wd Leg Base,NonContrast,29x29D**

Model #999  
FABRIC: GRADE H TBD  
WOOD LEG FINISH: CORE  
WOODFIN: KENSINGTON MAPLE ON MAPLE

\$2,494.80/unit  
Qty. 4  
**\$9,979.20**

**Custom item:** This item may not be cancelled or returned.



**Affina High Back Closed Arm Lounge Chair,Non-Contrast**

Model #999  
FABRIC: GRADE H TBD  
WOOD FINISH: CORE  
WOODFIN: KENSINGTON MAPLE ON MAPLE  
GLIDES: TBD  
WINGBACK: YES  
WOOD ARMCAPS: PAIR

\$3,220.56/unit  
Qty. 10  
**\$32,205.60**

**Custom item:** This item may not be cancelled or returned.



**Affina High Back Closed Arm Loveseat,Non-Contrast**

Model #999  
FABRIC: GRADE H TBD  
WOOD FINISH: CORE  
WOODFIN: KENSINGTON MAPLE ON MAPLE  
GLIDES: TBD  
WINGBACK: YES  
WOOD ARMCAPS: PAIR

\$3,948.84/unit  
Qty. 2  
**\$7,897.68**

**Custom item:** This item may not be cancelled or returned.



**Affina Rectangular Coffee Table,16"H,Laminate Top,24x42"**

Model #999  
WOOD FINISH: KENSINGTON MAPLE ON MAPLE  
LAMINATE: TBD

Qty. 1  
**\$1,143.45**

**Custom item:** This item may not be cancelled or returned.



**Apply 4-Leg Chair,Wood Laminate Shell**

Model #999  
FRAME COLOR: TBD  
LAMINATE COLOR: TBD  
GLIDE OPTION: TBD

\$297.36/unit  
Qty. 16  
**\$4,757.76**

**Custom item:** This item may not be cancelled or returned.



**CrossRoads Dictionary Stand,  
29Dx36Wx45"H,Oak**

Model #999  
END PANEL: STRAIGHT  
WOOD FINISH: MEDIUM ON OAK  
SURFACE: TBD

\$2,152.71/unit  
Qty. 2  
**\$4,305.42**

**Custom item:** This item may not be cancelled or returned.



**CrossRoads Media Display Metal  
Shelving AdderSingle,**

Model #999  
SIZE: 12D X 36 1/4 W X 82H  
TYPE: OAK  
END PANEL: STRAIGHT  
WOOD FINISH: MEDIUM ON OAK  
METAL SHELF PAINT: TBD

Qty. 1  
**\$4,001.13**

**Custom item:** This item may not be cancelled or returned.



**CrossRoads Media Display Metal  
Shelving StarterSingle**

Model #999  
SIZE: 12D X 37 1/2W X 82H  
TYPE: OAK  
END PANEL: STRAIGHT  
WOOD FINISH: MEDIUM ON OAK  
METAL SHELF PAINT: TBD

Qty. 1  
**\$4,467.33**

**Custom item:** This item may not be cancelled or returned.

**CUSTOM**

**\*Modified-CrossRoads 42"H Meta  
I Shelving Starter-DoubleFace**

Model #999  
SIZE: 24D X 37 1/2W  
TYPE: OAK  
END PANEL: STRAIGHT  
WOOD FINISH: MEDIUM ON OAK  
METAL SHELF PAINT: SAND  
BACK PANEL: YES  
SHELF TYPE: TBD  
CASTER/GLIDES: CASTERS  
BASE DIM: 42"H

Qty. 1  
**\$2,271.15**

**Custom item:** This item may not be cancelled or returned.



**CrossRoads 82"H Metal Shelving  
Adder-Double Face,24Dx361/4"W**

Model #999  
TYPE: OAK  
END PANEL: STRAIGHT  
WOOD FINISH: MEDIUM ON OAK  
METAL SHELF PAINT: TBD  
BACK PANEL: YES  
SHELF TYPE: TBD

\$1,824.48/unit  
Qty. 12  
**\$21,893.76**

**Custom item:** This item may not be cancelled or returned.





**CrossRoads 82"H Metal Shelving  
Starter-Double Face,24Dx371/2**

Model #999

TYPE: OAK

END PANEL: STRAIGHT

WOOD FINISH: MEDIUM ON OAK

METAL SHELF PAINT: TBD

BACK PANEL: YES

SHELF TYPE: TBD

\$2,178.54/unit

Qty. 6

**\$13,071.24**

**Custom item:** This item may not be cancelled or returned.



**CrossRoads 82"H Metal Shelving  
Adder-Single Face,12Dx361/4"W**

Model #999

TYPE: OAK

END PANEL: STRAIGHT

WOOD FINISH: MEDIUM ON OAK

METAL SHELF PAINT: TBD

BACK PANEL: YES

SHELF TYPE: TBD

\$1,125.18/unit

Qty. 12

**\$13,502.16**

**Custom item:** This item may not be cancelled or returned.



**CrossRoads 82"H Metal Shelving  
Starter-Single Face,12Dx371/2**

Model #999

TYPE: OAK

END PANEL: STRAIGHT

WOOD FINISH: MEDIUM ON OAK

METAL SHELF PAINT: TBD

BACK PANEL: YES

SHELF TYPE: TBD

\$1,363.32/unit

Qty. 8

**\$10,906.56**

**Custom item:** This item may not be cancelled or returned.



**CZ Wood Leg Rectilinear  
Conference Table, Up to Three**

Model #999

SIZE: 51.5D X 95.5W

WOOD FINISH: TBD

SURFACE FINISH: TBD

EDGE COLOR: TBD

PAINT COLOR: TBD

GLIDE COLOR:

\$1,421.91/unit

Qty. 2

**\$2,843.82**

**Custom item:** This item may not be cancelled or returned.



**Signia Advanced Synchrotilt Ta  
sk Chair, Mesh Back, 1D Arms**

Model #999

BACK MESH COLOR: TBD

LUMBAR OPTION: TBD

BASE/FRAME: BLACK

BACKREST/ARM FRAME: TBD

CASTER: TBD

FABRIC: PALLAS GROUP P1

\$720.72/unit

Qty. 2

**\$1,441.44**

**Custom item:** This item may not be cancelled or returned.



**Strive Task Cantilever Arm  
Chair, Uphol Seat**

Model #999  
BASE: TBD  
CASTER: TBD  
FABRIC: PALLAS GROUP P1

\$438.48/unit  
Qty. 3  
**\$1,315.44**

**Custom item:** This item may not be cancelled or returned.



**U-Series Mobile Pedestal, Box/  
File, 20" Nominal Depth**

Model #999  
PAINT COLOR: STARLIGHT SILVER METALLIC  
LOCK OPTION: TBD  
PULL STYLE: TBD

\$320.04/unit  
Qty. 2  
**\$640.08**

**Custom item:** This item may not be cancelled or returned.

MULTIPURPOSE MEETING



**Pirouette, Nesting Collaborativ  
e, Rectangular, 30x60\", 74P Edge**

Model #999  
EDGE: TBD  
LAMINATE: TBD  
LEG FINISH: TBD  
CASTER/GLIDE: TBD

\$922.95/unit  
Qty. 6  
**\$5,537.70**

**Custom item:** This item may not be cancelled or returned.



**Strive Sled Base Armless Chair  
, Poly**

Model #999  
FRAME: TBD  
POLY SEAT & BACK: TBD  
GLIDE OPTION: TBD

\$182.07/unit  
Qty. 24  
**\$4,369.68**

**Custom item:** This item may not be cancelled or returned.

OFFICE



**Doni Tapered Wood Leg Armless  
Chair, Uph Seat, Two-Tone**

Model #999  
TWO TONE POLY COLOR: TBD  
WOOD FINISH: TBD  
GLIDE OPTION: TBD  
UPHOLSTERY: PALLAS FABRIC GROUP P1 TBD

\$676.62/unit  
Qty. 2  
**\$1,353.24**

**Custom item:** This item may not be cancelled or returned.



**Aristotle Rect Desk Shell, 2  
Full End Panels, 72x30"**

Model #999  
LAMINATE: TBD  
LAMINATE BASE: TBD

Qty. 1  
**\$699.93**

**Custom item:** This item may not be cancelled or returned.



**Aristotle Full Ht Pedestal, Box / Box/File, 15.5x19x28"**

Model #999  
LAMINATE BASE: TBD  
FILE PULL: RECTANGULAR SILVER PULL  
KEY OPTION: TBD

Qty. 1  
**\$699.93**

**Custom item:** This item may not be cancelled or returned.



**Signia Advanced Synchrotilt Task Chair, Mesh Back, 1D Arms**

Model #999  
BACK MESH COLOR: TBD  
LUMBAR OPTION: TBD  
BASE/FRAME: BLACK  
BACKREST/ARMFRAME COLOR: TBD  
CASTER OPTION: TBD  
FABRIC: PALLAS GROUP P1 TBD

Qty. 1  
**\$720.72**

**Custom item:** This item may not be cancelled or returned.

**CUSTOM**

**Aristotle Top only to be used with Toggle Electrical C-Leg, O**

Model #999  
SIZE: 24X48  
GROMMET: REAR CENTER  
LAMINATE: TBD

Qty. 1  
**\$196.56**

**Custom item:** This item may not be cancelled or returned.



**Toggle C-Leg Table, Rect, Dual Motor Electric Base, 74P**

Model #999  
BASE FINISH: TBD  
EDGE COLOR: TBD  
SURFACE FINISH: TBD

Qty. 1  
**\$1,359.54**

**Custom item:** This item may not be cancelled or returned.

**Notes:**

<b>ESTIMATED INSTALLATION</b>	<b>\$9,000.00</b>
<b>Tailgate Delivery Charge</b>	<b>\$0.00</b>

Quote billing address:

**George H. Stowell Free Library**  
**School Street**  
**Cornish Flat, NH 03746**

<b>Subtotal:</b>	\$206,717.94
Taxes:	\$0.00
<b>Total:</b>	<b>\$206,717.94</b>

**THANK YOU FOR THE OPPORTUNITY TO QUOTE YOUR FURNITURE.**

## Terms and Conditions

We do our best to make sure that your order is correct. Please review this order to confirm that the model number, color, quantity, size, and price are all correct. If all the information is accurate, please sign and return to me by email. If there is a discrepancy, please call Dan Anderson at 603-882-9418 so that we may correct the error and process your order.

### 1. Know Your Shipping Methods:

- a. **Tailgate delivery** - The truck driver is only responsible to move the furniture to the tailgate (back) of the truck. You are responsible to unload the furniture from the truck and carry it into your building.
- b. **Liftgate Delivery\*** - Recommended for heavier or larger shipments. A liftgate (a steel elevator-like platform at the end of the truck) is used to lower the merchandise off the truck down to the street level, so you don't have to do it yourself.
- c. **Assisted Inside Delivery\*** - The truck driver will help you offload the goods from the truck and bring them into the first dry area of your building.
- d. **Notify Before Delivery\*\*** - When a shipment is ready to ship, the trucking company will call you within approximately 24 hours to arrange for a convenient time for the delivery

**\*Liftgate Delivery and Assisted Inside Delivery are available for an additional charge. If you do not order these services in advance and then request them from the freight company at the time of delivery, or if a redelivery will be required, you will be responsible for any additional charges incurred.**

**\*\*Notify Before Delivery is available for an additional charge. Unless you request this service, you will not be notified about the delivery ahead of time. If you're not available to accept the delivery, you will be responsible for redelivery charges.**

### 2. Steps to take at time of delivery to protect against loss or damage:

- a. **Verify count** - Make sure you are receiving as many cartons as are listed on the delivery receipt. If any shortage is discovered, note exactly how many cartons are short on the carrier's delivery receipt and have the driver note the shortage on your copy.
- b. **Carefully examine each carton for damage** - If damage is visible, note this fact on the delivery receipt and please be specific with your notations (for example, cartons crushed or carton has a hole in it). If the cartons are severely damaged, do not accept the shipment. The customer has a right to accept partial shipments and refuse the remaining damaged units. If a carton has appearances that the contents inside may possibly be damaged, insist that it be opened right at that time, and both you and the driver should make a joint inspection of the contents. Any such concealed damage should likewise be noted on the delivery receipt and on your copy. Be sure to retain your copy. Hertz Furniture should be advised immediately. Please contact our Customer Service department at 800-526-4677 option 4.
- c. **Immediately after delivery, open all cartons and inspect for concealed damage** - Even though the driver has already left, all cartons should immediately be opened, and the contents inspected for possible concealed damage. Hertz Furniture will only accept responsibility for damage reported within 5 days from delivery.

**3. Steps to take when visible or concealed damage is discovered:**

- a. **Retain damaged items** - Not only must damaged items be held at the point where they are received, but the cartons and all inner packing materials must be held until an inspection is made by a carrier inspector.
- b. **Report concealed damage to Hertz Furniture immediately** upon the discovery of damage that could not have been determined at time of delivery. Failure to report damages within 5 days will affect replacements of the damaged merchandise and the outcome of the claim.
- c. **Document all your correspondence in writing** - Pictures of the damaged cartons as well as their contents are required. This documentation will enable Hertz Furniture to settle the freight claims more efficiently and rapidly.

**4. Document all your correspondence in writing** - Pictures of the damaged containers as well as the contents in the containers are required. This documentation will enable Hertz Furniture to settle the freight claims more efficiently and rapidly.

**5. Steps to take when carrier makes inspection of damaged items:**

- a. **Have damaged items in receiving area** - Make certain the damaged items have not been moved from the receiving area prior to discovery of the damage. Allow the inspector to inspect damaged items, cartons, inner packing materials and freight bill. Be sure to retain your delivery receipt - it will be needed as a supporting document when the claim is filed.
- b. **After the inspector fills out inspection report, carefully read it before signing** - If you do not agree with any facts or conclusions made by the inspector on the report, do not sign it. Unless repairs will be completely satisfactory, be sure the inspector requests replacement on the inspection report.
- c. **Forward your copy of the inspection report and delivery receipt to Hertz Furniture** - Call our Customer Service department at 800-526-4677 option 4 for further instructions. A freight claim will be filed on your behalf. Should you choose to do so, you may file your own claim. Hertz Furniture will take no responsibility should your claim be declined.

**6. Steps to take after inspection has been made:**

**The damaged merchandise must be held in original cartons** - Hertz Furniture will advise you of the disposition of the damaged unit when the claim is settled. The customer must make the product available for salvage pick up.

**7. Order Cancellation:**

An order may be canceled, but only before the order has been sent to production. In some cases, cancellations can be accepted even after the order is in production, but additional fees (restocking and/or cancellation) will be billed to your account.

If the order has already shipped, we can no longer cancel the order.

To confirm that your order has been canceled, we will send you a cancellation notice. Only then will the cancellation be in effect.

Custom orders (including many upholstered items) are non-cancelable.

**8. Returns:**

A return authorization must be issued before returning any merchandise. A restocking charge, as well as round trip freight charges, will be charged.

All items must be in the original carton, unassembled and unused. Please note that returns cannot be made after the product has been assembled. Custom orders are non-returnable. Many products (e.g. upholstered items) are considered custom items and are non-returnable. Please call us at 800-526-4677 for details.

Returns cannot be made after 30 days.



**9. Payment:**

Payment is due 30 days after the date of invoice, less any amount requested by Hertz Furniture as a deposit at time of order. The customer is required to pay for products received, but not for products that are on backorder.

Delinquent accounts are subject to a 1.5% monthly interest fee and in accordance with the Halachic Guidelines of Heter Iska and shall pay all collections costs. If Hertz Furniture is required to initiate any legal proceedings to enforce collection of the sums due from customer, the prevailing party in such litigation shall be entitled to recover its attorney's fees and costs incurred therein.

The invoice is due and payable in Ramsey, Bergen County, New Jersey. Jurisdiction for all legal issues will be the court system of the State of New Jersey.

Hertz Furniture reserves the right to make any and all changes to its website at its sole discretion without notice to the User. Hertz Furniture reserves the right to deny access to its website to anyone at any time. This Agreement shall be deemed to include all other notices, policies, disclaimers, and other terms contained in its website; provided, however, that in the event of a conflict between such other terms and the terms of this Agreement, the terms of this Agreement shall control.

This Agreement is governed by the laws of the State of New Jersey, USA, without reference to conflicts of laws provisions. User consents to the exclusive jurisdiction and venue of courts in Bergen County, New Jersey, U.S.A. in all disputes arising out of or relating to this agreement or use of the website. Use of the website is unauthorized in any jurisdiction that does not give effect to all provisions of these terms and conditions, including without limitation this paragraph.

Any rights not expressly granted herein are reserved.

I have read, understand, and accept this Quotation set forth above and the terms and conditions attached hereto. I further understand that, by signing and returning to Hertz Furniture a copy of this Quotation, CUSTOMER is entering into a contract with Hertz Furniture Systems, LLC (dba Hertz Furniture) to purchase the items set forth in this Quotation on the terms set forth herein and in the "Terms and Conditions" set forth herein and is further granting to Hertz Furniture Systems, LLC a lien on the items set forth in this Quotation as collateral for the obligations of CUSTOMER pursuant hereto, including payment to Hertz Furniture Systems, LLC, and consents to Hertz Furniture Systems LLC's filing of a UCC-1 Financing Statement with the appropriate governmental agency to perfect said lien.

**CUSTOMER**

**George H. Stowell Free Library**  
**School Street**  
**Cornish Flat, NH 03746**

--

**Quote # 686075**

Signature: \_\_\_\_\_ Name: \_\_\_\_\_

Title: \_\_\_\_\_ Date: \_\_\_\_\_

Alt Phone # (Mobile / Work / Personal) \_\_\_\_\_